

INTELLIGENT USE OF POWER



ALLMATIC
Spannsysteme **JAKOB**

PRODUCT OVERVIEW

	Type	Jaw width mm	Max. clamp. range mm	Max. clamp. force kN	Basic body mm	
Grip vices	TeleSense 125		125	281	40	398
	TeleCentric 70K TeleCentric 70M		70 70	135 200	30 30	286 351
	TITAN SC		125	332	60	429
	TITAN 2K TITAN 2M TITAN 2L TITAN 2-160		125 125 125 160	202 320 452 493	40 40 40 40	318 455 587 587
	T-Rex		125	185	40	256
	CentroGripp		125	195	40	329
	Conventional vices	HD		100 125 160	162 202 302	30 40 60
NC4			125 160	230 317	40 60	441 573
NC8			90	217	28	339
			125 M	313	40	483
	125 L		445	40	615	
	160		435	60	615	
200	435	60	615			
200 Heavy Duty	435	80	615			
Multiple clamping	DUO 90 DUO 125		90 125	306 417	28 40	482 640
	DUO Plus 125		125	240	40	633
	Jaws					
Accessories						

Raw part	Pre-machined part	Description	Axis			Page
			3	4	5	
x	x	5-axis vice with force monitoring	x	x	x	6 - 7
x	x	Centric vice Telescopic spindle, high-clearance contour remains unchanged	x	x	x	8 - 9
x	x	Central, simple programming within zero point offset	x	x	x	
x	x	The classical universal vice for vertical 3 axis machining centres. Conventional clamping and gripp clamping possible	x			10 - 11
x	x	With the support jaws, unmachined parts in highly varied materials, or with complexe geometries, can be clamped securely and economically	x	x	x	12 - 13
x	x					
x	x					
x	x					
x	x	Horizontal installation Reliable and fast clamping of unmachined parts, flame - cut and sawn materials	x	x	x	14 - 15
x	x	Centric vice Repeating accuracy +- 0,01 mm for angled workpieces The centre is adjustable The position of the workpiece stays within set boundaries	x	x	x	16 - 17
		Suitable for heavy machining work, heavy pieces and small batch sizes	x	x		18
	x	Easy handling Mechanical stop for safe operation	x	x		19
	x	Tool-less force setting with a mechanical stop for safe operation	x	x		20 - 21
	x					
	x					
	x					
	x					
	x	For clamping two identical parts dimensional differences of up to ± 3 mm are compensated for Lateral installation is also possible	x	x		22
x	x	Clamping range adjustment for clamping two workpieces of different sizes	x	x		23
						24
						48

1973



„ALLMATIC has been bringing you quality, precision and flexibility since 1973“

We are specialists.

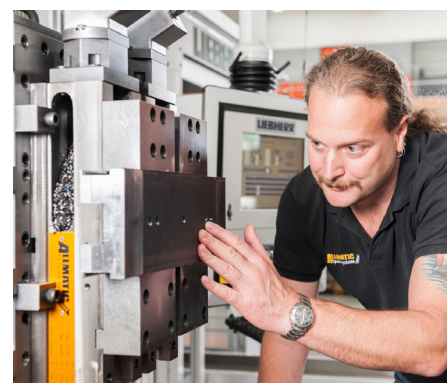
ALLMATIC is a specialist in the field of workpiece clamping systems and offers an impressive range of intelligent clamping solutions. We develop precise clamping and holding systems to the highest quality standards for demanding cutting tasks in milling and machining centres. We are the market leader in the high pressure clamping segment.

We love perfection.

The force of innovation and a passion for precision are the core of our brand. Our drive for maximum quality and reliability derives from our pursuit of perfection and fascination with new technologies. ALLMATIC is characterised by reliable products, expert support and first class service as well as fair, long-term co-operation with customers, business partners and employees.

We inspire.

Our enthusiasm for the efficiency of our products, our profound knowledge, personal support and active contribution to designing future solutions guarantee a long-term and active partnership.



ALLMATIC solutions for ...



„Individual manufacturers, series manufacturers and vocational training companies for mechanical engineering “

Individual and small series.

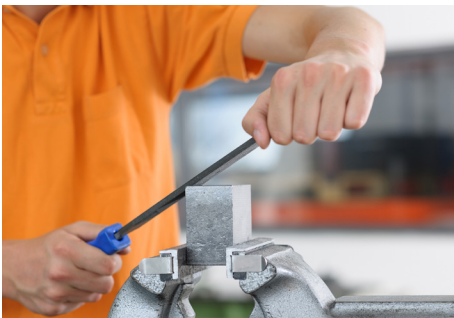
In the case of small and pilot series, there are often no binding production parameters - this is where multi-functional clamping systems from ALLMATIC are required, with which production processes can be flexibly organised and optimised.



Series production.

The precise positioning of workpieces with simultaneously constant clamping forces over the entire machining period - ALLMATIC manages this well with its experience.

We are just as good at supporting you in the automation of your existing or new production lines within the flow process of Industry 4.0.



Training centres.

Young people understand ALLMATIC clamping systems quickly and intuitively because they are simply designed and logically structured. Trainees thus rapidly acquire important skills with regard to safe working practices and production processes.

At ALLMATIC, the customer is the main focus

We provided comprehensive services before and after purchase. With well structured information on clamping system and their possible applications as well as first class advice on special solutions. So that you receive exactly the clamping system, which is best suited to your needs.

With ALLMATIC, you also benefit after purchase. With a warranty of 2 years, a 24-hour express repair service and at least 20 years' availability of replacement parts, you are well served in the long term.

That is what customers say about ALLMATIC

“The repair service of ALLMATIC is impeccable. We once sent in a defective spindle, which Mr. Albrecht immediately took care of. It was remarkable ... although we hadn't requested an express service, we received a replacement within two days.”

Günther Reich, Production Manager at AHP Merkle GmbH, small series production

The after-sales service meets Mr Bachhofer's expectations: “The service is good”.

The reliability of ALLMATIC also impresses him: “If a spindle should break, ALLMATIC already has a new spindle in stock.”

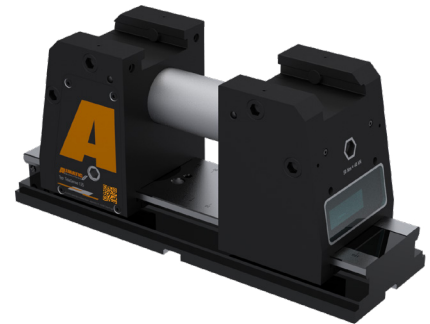
Matthias Bachhofer, Production Manager at TRIES GmbH & Co. KG, large series production

Range of application:

- Ideal for use on 5-axis machining centres due its optimal contour
- With integrated clamping force monitoring
- High clamping force with low use of force – 40 kN with 50 Nm due to power-transformed spindle

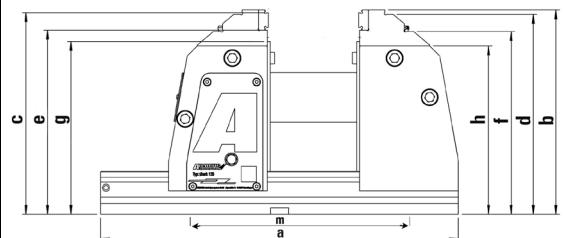
Product features:

- Clamping of rough and pre-machined parts (parallel, round and irregular parts) also with grip and pull-down clamping. Parts can also be clamped reliably without pre-stamping
- Maximum flexibility trough:
 - Universal quick change jaw for a variety of different setups
 - > thus reducing setup time and less force is required
 - Compatible tot he movable jaws of CentroGripp, T-Rex, NC8 and Titan 2 (adapter available)
 - Enlargement element for more clamping width
- Simple handling
 - Moving of both jaw supports, fixing one jaw side
 - Tool poor due to uniform wrench size (SW10) and identical torque for force adjustmenand locking
 - 4 threads for workpiece stop (M8)
- Simple use of the clamping force monitoring
 - Long battery life
 - Easy & quick battery change with standard batteries



Technical Information

TeleSense / Size		125	125 BLE
Art.No.		6921868000055	6921868000066
Raw part machining		x	x
Pre-machined part		x	x
Integrated clamping force monitoring			x
Clamping range max.	mm	206	206
Clamping rage max. with spindle extension	mm	281	281
Torque	Nm	50	50
Clamping force max.	kN	40	40
a	mm	398	398
b	mm	227	227
c	mm	224	224
d	mm	222	222
e	mm	204,5	204,5
f	mm	203	203
g	mm	192 - 217	192 - 217
h	mm	187	187
m	mm	200	200



ACCESSORIES

Universal quick change jaw 125

- Clamping of raw and pre-machined parts (parallel, round and irregular parts) - including gripp and pull-down clamping
- Quick change system for rapid change of jaws
- Maximum flexibility for a variety of different setups

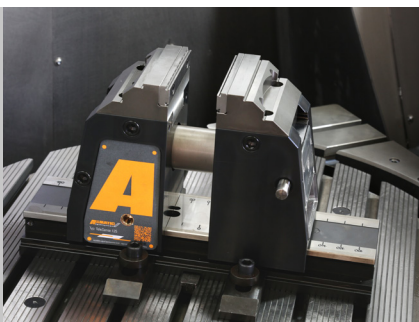
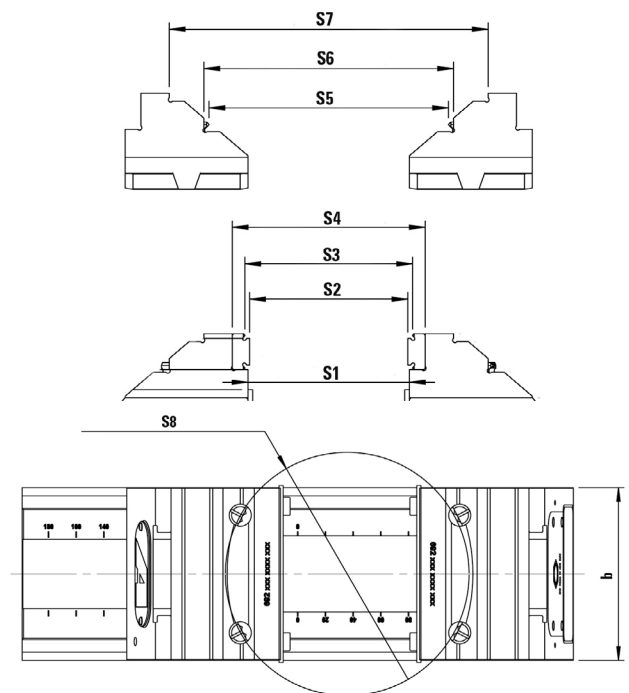


Product features:

- Material: hardened steel
- Functions as step jaw for clamping pre-machined workpieces
- Functions as mould jaw for round parts
- Gripp-strip can be attached for clamping close to the edge for materials up to 1.000 N/mm²
- Use of all gripp-studs of the Titan 2-series possible
- Reliable clamping without pre-stamping

Technical Information

Size	125	
Art.No.	6921864001031	
Clamping range S1 min.	TeleSense	1,5 - 102,5
Clamping range S2 min.	TeleSense	0 - 100,5
Clamping range S3 min.	TeleSense	6 - 106,5
Clamping range S4 min.	TeleSense	21,5 - 122,5
Clamping range S5 min.	TeleSense	51 - 152
Clamping range S6 min.	TeleSense	57,5 - 158,5
Clamping range S7 min.	TeleSense	101,5 - 202,5
Clamping range S8 min.	TeleSense	Ø 150 - Ø 240
b	mm	125



TELESENSE 125

5-axis vice with force monitoring

Power - intelligently used

- + Integrated wireless clamping force monitoring
- + High clamping force with low force application
- + Maximum flexibility due to universal quick-change jaw

NEW

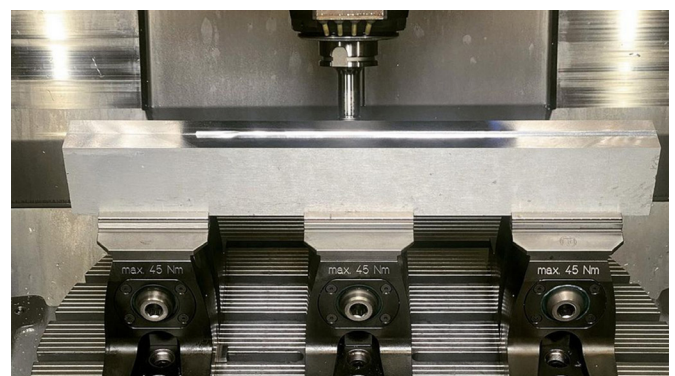
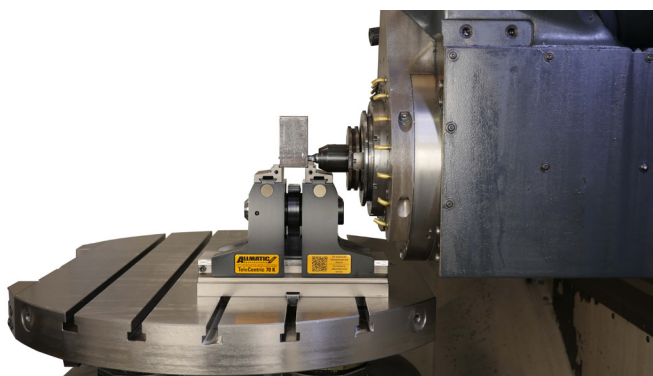
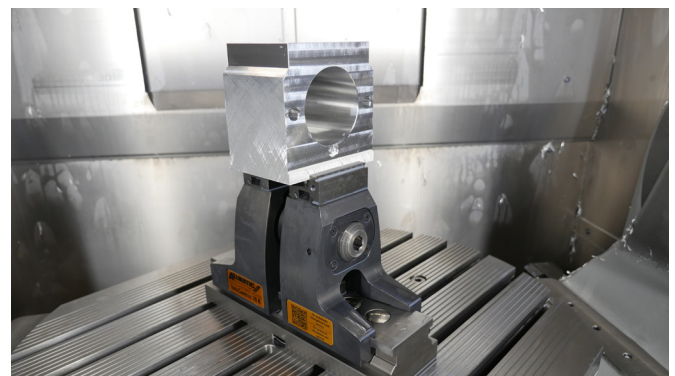
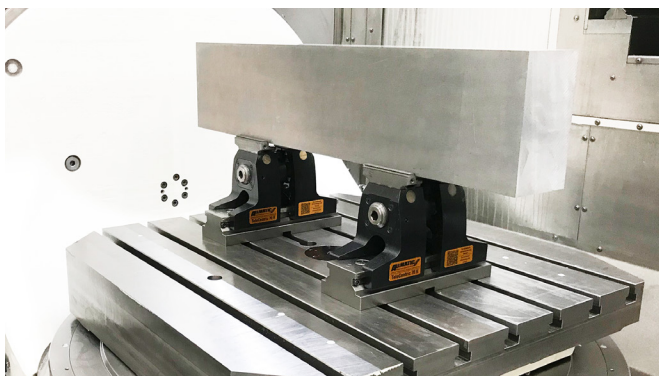
TELECENTRIC

Range of application:

- Centric vice
- Ideal for use in 5-axis machining
- Conventional clamping and Gripp clamping possible

Product features:

- Maximum accessibility
- Safe and reliable clamping; high accuracy; low susceptibility to vibration
- Short set-up times; quick-change jaws for zero-point clamping systems
- Easy to operate; simple jaw change; low weight
- For small to medium machine tables; optimum table size: 280-400 mm
- Telescopic spindle, interference contour remains unchanged
- Central, simple programming without zero point offset
- The allowance of the material is symmetrically distributed
- Accessibility of the workpiece depends on the chuck capacity
- Symmetrical construction shape = workpiece remains central and parallel
- Support height of the workpiece 192 mm
- Quick change jaw system, tool-free jaw change due to quick-action closure within 10 seconds per jaw pair
- Reversible jaws: for min. / max. chuck capacities with one pair of jaws
- Constant clamping force via low-maintenance telescopic spindle
- Standard with locating holes $\varnothing 25H6 M10$ for zero-point clamping systems; inside micrometre 200 mm ± 0.01 mm
- Attachment to machine table with mounting raster 50/63 mm for fitting bolt/cylinder-screws or clamping shoes.
- Integrated scaling for fine adjustment of the central position

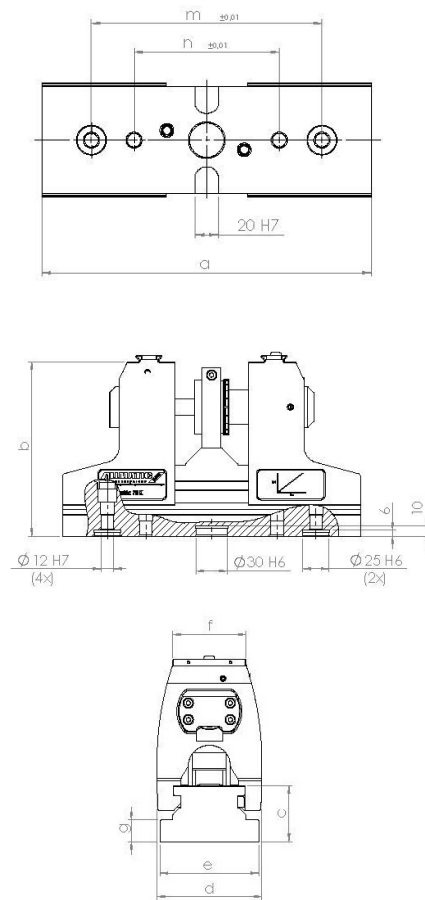


TECHNICAL INFORMATION

TeleCentric / Size	70 K	70 M
Art.No.	6921548000055	6921548000155
Raw part machining	x	x
Pre-machined part	x	x
Clamping range max.	mm 207	305
Clamping range	mm 0 - 128	42 - 143
Torque	Nm 45	45
Clamping force max.	kN 30	30
Weight	kg 17,5	19,5
a	mm 286	351
b	mm 168,9	168,9
c	mm 54	54
d	mm 100	100
e	mm 94	94
f	mm 70	70
g	mm 21	21
m	mm 200	200
n	mm 126	126

Suitable accessories

	70 K	70 M
Side clamps	Art.No. 6921025000031	
Torque wrench 10-60 Nm	Art.No. 0651114113188	
Torque wrench 20-120 Nm	Art.No. 0651114113153	
Hand crank for pre-adjustment WAF14	Art.No. 6921545508031	
Clamping range adapter	Art.No. 6921545008055	
Workstop piece	Art.No. 6921525650031	
Workstop piece	Art.No. 6921525650131	



For small and medium-sized machine tables

In conventional clamping, parallel, pre-machined workpieces and materials are clamped. Generally, the conventional method is used for the second clamping procedure or for workpieces with a parallel error of up to 0,05 mm. The optimum table size is 280-400 mm.

This image shows a versatile jaw assortment, which is suitable for pre-machined workpieces.



5-axis vice with GRIPP

For GRIPP clamping, unmachined, non-parallel parts or raw materials are used.

Pre-machined workpieces:

- Suitable for material strength of up to 1000 N/mm²

Raw materials:

- Suitable for material strength of up to 550 N/mm²
- Error in parallelism up to 0,3 mm

With the jaw systems, you can clamp parallel workpieces safely and quickly. Stamping and clamping happens in one process.



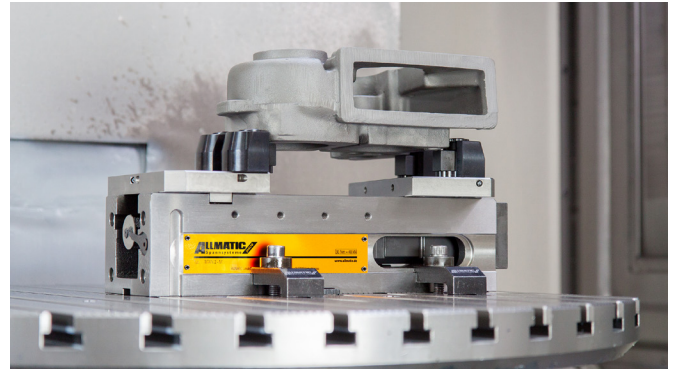
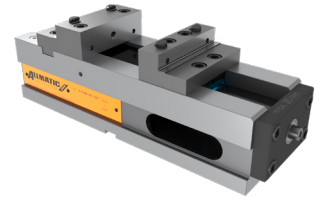
TITAN SC 125

Range of application:

- The classical, universal vice, for vertical 3 axis machining centres
- Conventional clamping and gripp clamping possible
- Clamping of raw parts, flame and saw cuts by penetrating hardened and interchangeable gripp elements into the workpiece
- With the support jaws, unmachined parts in highly varied materials, or with complex geometries, can be clamped securely and economically. Gripping studs suitable for materials up to approx. 1400 N/mm² strength, depending on accessories.

Product features:

- Standard with locating holes \varnothing 25H6 M10 for zero-point clamping systems; inside micrometre 200mm \pm 0.01mm
- With grounded jaws, the TITAN SC 125 has the precision, which is necessary for machining workpieces
- Fully enclosed gripp spindle for clamping and forming raw material
- The high-pressure spindle, with a mechanical force amplifier (using the torque wrench), allows you to work and clamp to a table
- Stable GJS60 body, grounded top and bottom
- Double-sided M8 thread for workpiece stop
- Precise tracks in the grounded surface of the soles for optimum alignment on the machining table
- Click-quick-change system for attaching jaws and click parallels

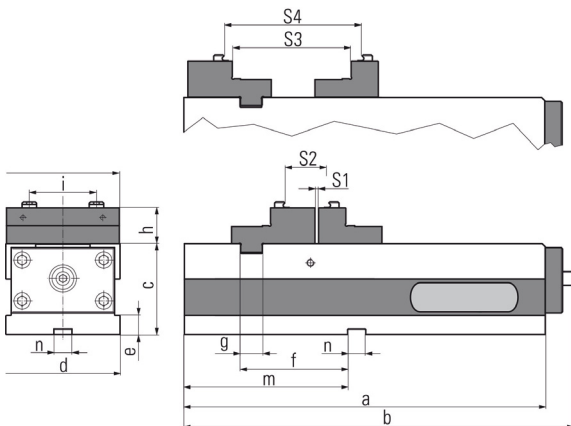


TECHNICAL INFORMATION

TITAN SC 125 / Size	125	
Art.No.	6921888010755	
Raw part machining	x	
Pre-machined part	x	
Clamping range max.	mm	332
Clamping range S1 min.	mm	0 - 182
Clamping range S2 min.	mm	52 - 224
Clamping range S3 min.	mm	131 - 313
Clamping range S4 min.	mm	160 - 332
Tourque max.	Nm	30
Clamping force max.	kN	40
Weight	kg	35
a min.	mm	520
a max.	mm	682
a	mm	398
b	mm	429
c	mm	100
d	mm	126
e	mm	21
f	mm	118
g	mm	24
h	mm	39,5
i	mm	74
k	mm	124,4
m	mm	180
n	mm	20

Suitable accessories

	125	
Side clamps	Art.No.	6921025000031
DUO Side clamps	Art.No.	6921285000031
Torque wrench	Art.No.	0651114113188
Console	Art.No.	6921885010042
Workstop piece	Art.No.	6921285650144
Workstop piece	Art.No.	6921685670042



Trägerbacken mit Grippeinsätzen/Support jaws with gripper studs



min. Spannweite/clamping range	28 mm
min. Spannweite/clamping width	70mm



max. Spannweite/clamping range	320 mm
max. Spannweite	mindestens 160 mm oder größer
max. clamping width	at least 160 mm or larger



min. Spannweite/clamping range	Ø 70 mm
--------------------------------	---------

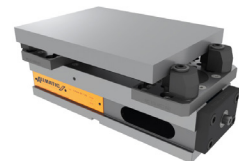


max. Spannweite/clamping range	Ø 330 mm
--------------------------------	----------

Trägerbacken mit Universal Gripset/Support jaws with universal gripper set



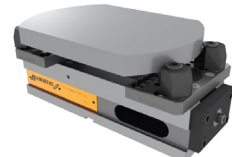
min. Spannweite/clamping range	25 mm
min. Spannweite/clamping width	80 mm



max. Spannweite /clamping range	310 mm
max. Spannweite	mindestens 165 mm oder größer
max. clamping width	at least 165 mm or larger



min. Spannweite/clamping range	Ø 70 mm
--------------------------------	---------



max. Spannweite/clamping range	Ø 330 mm
--------------------------------	----------



SERVICE-APP

All new models are also equipped with a QR code. You can thus access operating instructions, technical data sheets and CAD drawings conveniently via your smart phone or tablet. Your service app also contains a fast link to replacement parts and accessories as well as direct registration of service cases for your device.



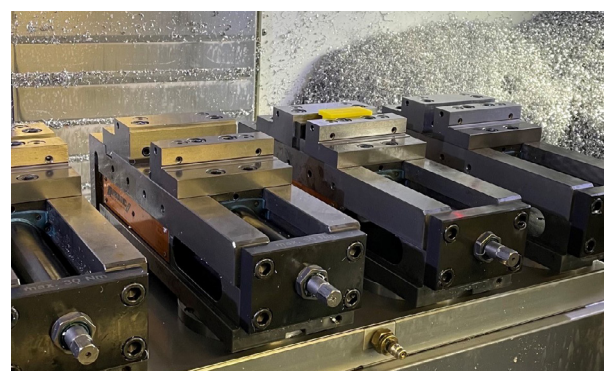
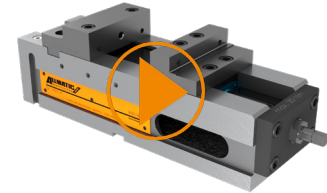
TITAN 2

Range of application:

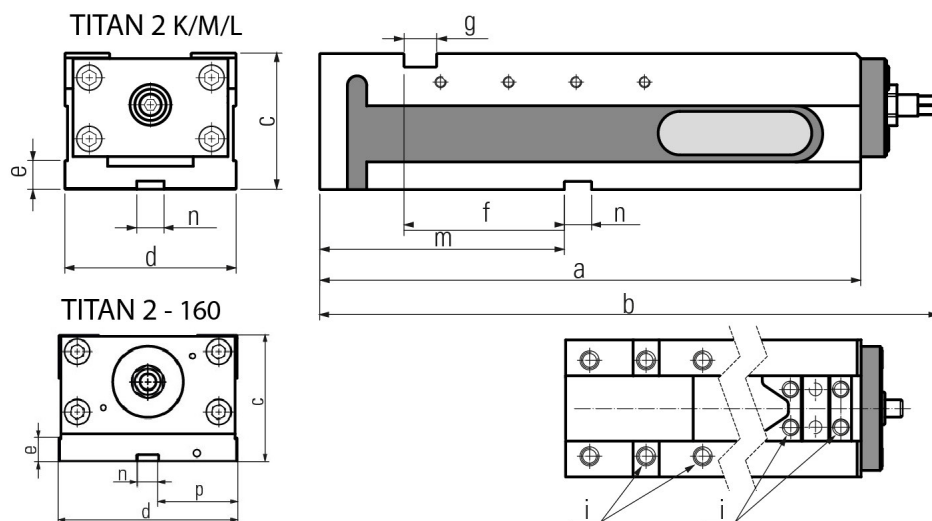
- Can be applied horizontally or vertically – therefore suitable for vertical and horizontal CNC milling machines
- Conventional clamping, gripp clamping or pull-down clamping are all possible
- Clamping unmachined parts, saw cut or flame-cut material by penetration of hardened, replaceable gripp elements into the workpiece
- With the support jaws, unmachined parts in highly varied materials, or with complex geometries, can be clamped securely and economically. Gripp-studs suitable for materials up to approx. 1400 N/mm² strength, depending on accessories

Product features:

- Standard with locating holes \varnothing 25H6 M10 for zero-point clamping systems; inside micrometre 200mm \pm 0.01mm (Titan 2K & M)
- High versatility – the modular clamping system combines practically all the possibilities of our tried-and-tested models
- The TITAN 2 is ground and polished on all sides
- High-pressure spindle with force amplifier. Clamping force does not slacken
- Enlarged clamping span for secure clamping of unmachined parts
- Lost clamping margin 8 mm with pull-down, 3 mm with GRIPP
- Clamping near to neutral axis
- Clamping jaws of forerunner are compatible



TECHNICAL INFORMATION



TITAN 2 / Size		125 K	125 M	125 L	160
Art.No.		6921738000055	6921838000755	6921838000055	6921848000055
Raw part machining		x	x	x	x
Pre-machined part		x	x	x	x
Clamping range maximal	mm	195	313	445	493
Torque	Nm	30	30	30	30
Clamping force max.	kN	40	40	40	40
Mounting holes	mm	200	200		
Weight	kg	22	30	38	68
a	mm	280	398	530	530
b	mm	318	455	587	615
c	mm	100	100	100	115
d	mm	126	126	126	164
e	mm	21	21	21	21
f	mm	77	118	216	164
g	mm	24	24	24	30
m	mm	139	180	278	234
n	mm	20	20	20	20
i	mm	M12	M12	M12	M16
p	mm			176	72

Suitable accessories

		125 K	125 M	125 L	160
Side clamps	Art.No.	6921025000031			
DUO Side clamps	Art.No.	6921285000031			
Torque wrench	Art.No.	0651114113188			
Clamping range enlargement	Art.No.	6921685008055			6921705008055
Console	Art.No.	6921735011042	6921885010042		
Workpiece stop	Art.No.	6921285650144			
Workpiece stop	Art.No.	6921685670042			



Configure your tombstone with our TITAN 2M and TITAN 2-160!

www.allmatic.de/tombstone

T-REX

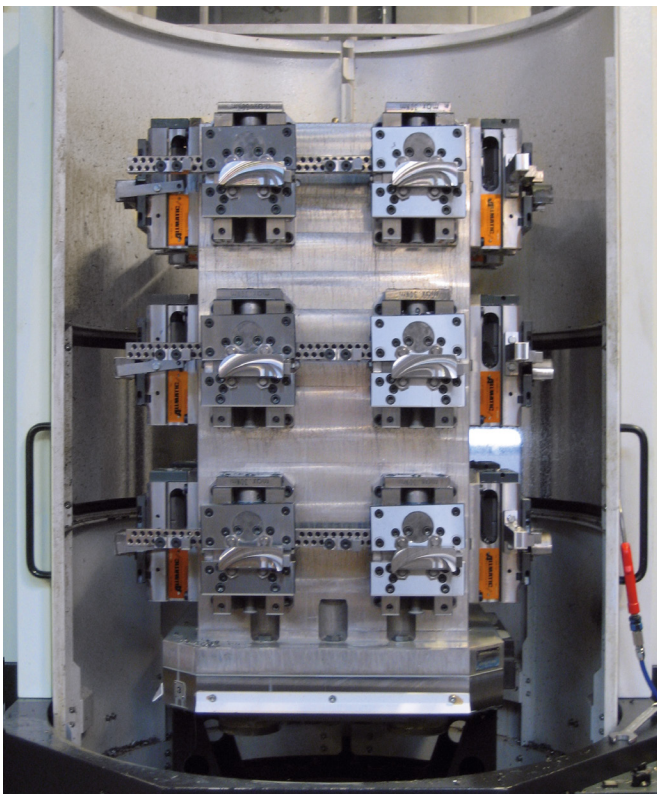
Range of application:

- Horizontal installation – suitable for vertical CNC-controlled milling machines
- Ideal for use on 5-axis machining centres
- Reliable and fast clamping of unmachined parts, flame-cut and saw-cut materials with gripp jaws
- Clamping of parallel pre-machined workpieces with optional step jaws
- Gripp studs suitable for materials with a strength of up to approx. 1400 N/mm², depending on accessories



Product features:

- Standard with locating holes \varnothing 25H6 M10 for zero-point clamping systems; inside micrometre 200mm \pm 0.01mm
- Optimum accessibility for 5-sided machining thanks to the combination of compact base and large clamping width
- Stamping and clamping in a single process, in the working area itself, without any additional accessories
- The movable/pivot support jaw allows different workpiece contours to be clamped
- Gripp studs can be changed without tools and are easy to adjust by hand
- High-pressure spindle with force amplifier
- Fixing via the hole grid on both sides or with side clamps
- Standard with mounting holes

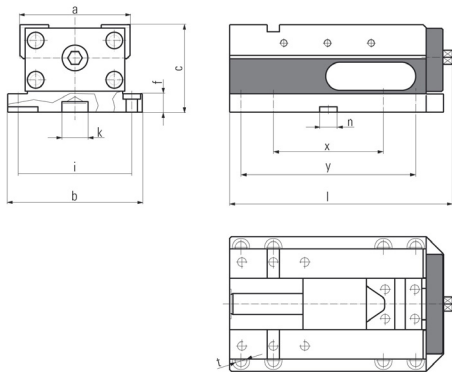


TECHNICAL INFORMATION

T-Rex / Size	125	
Art.No.	6921888000155	
Raw part machining	x	
Pre-machined part	x	
Clamping range max.	mm	208
Torque	Nm	30
Clamping force max.	kN	40
Weight	kg	18
a	mm	126
b	mm	154
c	mm	100
f	mm	21
i	mm	130
k	mm	Ø30 H8
l	mm	256
n	mm	20H7
t	mm	Ø13
x	mm	127
y	mm	200

Suitable accessories

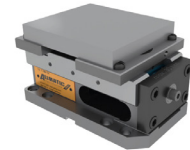
		125
Side clamps	Art.No.	6921025000031
Torque wrench	Art.No.	0651114113188
Console	Art.No.	6921885009042
Workpiece stop	Art.No.	6921285650144
Workpiece stop	Art.No.	6921685670042



Trägerbacken mit Grippeinsätzen/Support jaws with gripper studs T-REX



min. Spannweite/clamping range	26 mm
min. Spannweite/clamping width	73 mm



max. Spannweite/clamping range	185 mm
max. Spannweite/clamping width	mindestens 150 mm oder größer at least 150 mm or larger



min. Spannweite/clamping range	Ø 80 mm
--------------------------------	---------



max. Spannweite/clamping range	Ø 190 mm
--------------------------------	----------

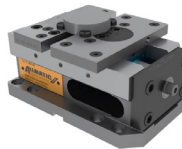
Trägerbacken mit Grippeinsätzen/Support jaws with gripper studs T-REX



min. Spannweite/clamping range	26 mm
min. Spannweite/clamping width	73 mm



max. Spannweite/clamping range	185 mm
max. Spannweite/clamping width	mindestens 150 mm oder größer at least 150 mm or larger



min. Spannweite/clamping range	Ø 80 mm
--------------------------------	---------



max. Spannweite/clamping range	Ø 190 mm
--------------------------------	----------



INTUITIVE, CLEVER AND EASY CLAMPING

The Allmatic GRIPP technology is a safe way of clamping complex, irregularly shaped workpieces. The "GRIPP teeth" bite into the material of the blank up to a depth of 1 mm. This ensures optimum form closure between the workpiece and the jaws. In the case of steel, for example, this generates a holding force of approximately 40 kN transverse to the clamping force. As a comparison... with smooth clamping surfaces, transverse forces can usually not be greater than 6 kN.

Our GRIPP technology combines with the wide range of standard Gripp jaws can dramatically reduce set-up time and material costs. You can clamp without the need for costly and time consuming pre-stamping, and complete the first and second milling process with only one pair of jaws. The clamping edge loss can be reduced to 3mm, thus optimising material costs.

The operation of our vices is intuitive, safe and ergonomic. The mechanical force amplifier ensures a clamping force of at least 40 kN by only 30 Nm torque. The quick and easy positioning of our vices is guaranteed thanks to the standard fixture bores for zero-point clamping systems.

CENTRO GRIPP

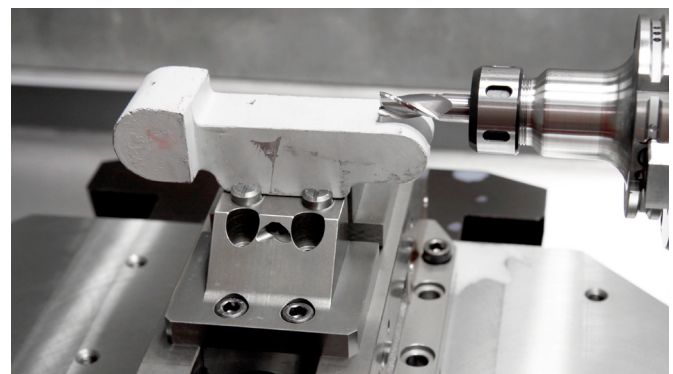
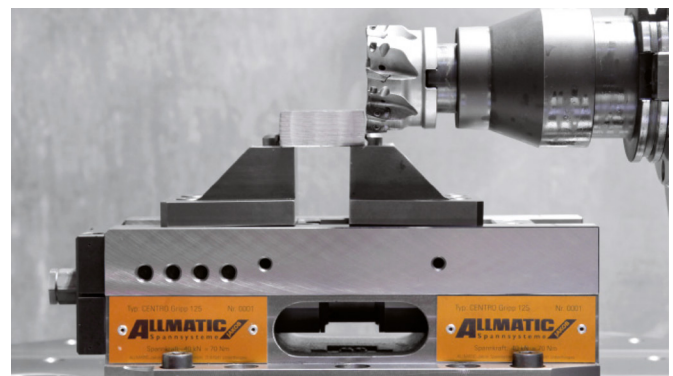
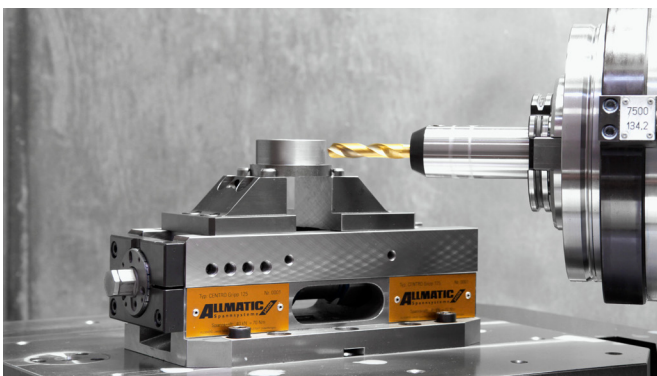
Range of application:

- Centric vice
- Horizontal installation – suitable for vertical CNC-controlled milling machines
- Ideal for use on 5-axis machining centres due to its compact design
- Depending on the clamping jaws, both pre-machined workpieces and unmachined parts can be clamped
- With support jaws, unmachined parts with varying types of flame-cut and sawn materials and even complex castings can be clamped safely and economically. Gripp studs suitable for materials of mechanical strength of up to approx. 1000 N/mm²



Product features:

- Standard with locating holes \varnothing 25H6 M10 for zero-point clamping systems; inside micrometre 200 mm \pm 0.01 mm
- The centre is adjustable. The position of the workpiece stays within set boundaries
- Repeating accuracy for rectangular workpieces \pm 1/100 mm
- Guides ground, polished and paired
- Clamping range presetting via adjustment of clamping jaws along transverse slots of spindle nuts
- Moulding and clamping in a single step, directly in the work area – no auxiliary aids required
- Use with a torque wrench – max. 70 Nm
- Fully enclosed and maintenance-free high-pressure spindle – high chip protection, minimum cleaning requirements, constant clamping forces up to 40 kN
- Fixing via the hole grid on both sides or alternative with side clamps
- Standard with mounting holes

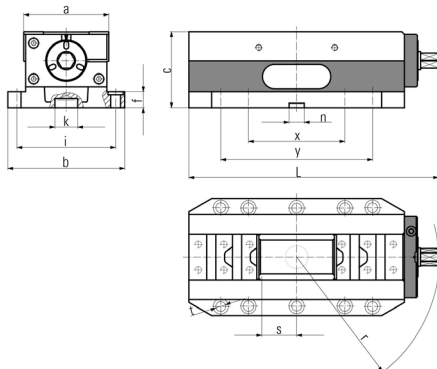


TECHNICAL INFORMATION

CentroGripp / Size	125	
Art.No.	6921538000055	
Raw part machining	x	
Pre-machined part	x	
Clamping range max.	mm	247
Torque	Nm	70
Clamping force max.	kN	40
Weight	kg	20,7
a	mm	112
b	mm	154
c	mm	100
f	mm	21
i	mm	129/130
k	mm	Ø30 H8
l	mm	329
n	mm	20H7
r	mm	182
s (path)	mm	46
t	mm	Ø13
x	mm	127
y	mm	200

Suitable accessories

		125
Side clamps	Art.No.	6921025000031
Torque wrench	Art.No.	0651114113153
Console	Art.No.	6921885009042
Workpiece stop	Art.No.	6921285650144
Workpiece stop	Art.No.	6921685670042



REPAIR - CENTRE

The repair centre contains all important info for smooth and uncomplicated processing of your repair. Our aim is for you to receive your repaired high-pressure vice at low cost and as quickly as possible.

www.allmatic.de/repair

INVESTMENT PROTECTION

To ensure you have continual production with minimum downtimes, we also offer an express repair service on request. We generally guarantee availability of replacement parts for at least 20 years. In addition, on purchase, you receive a warranty of 24 months for your product and repairs.

Trägerbacken mit Grippeinsätzen/Support jaws with gripper studs **CENTRO GRIPP**



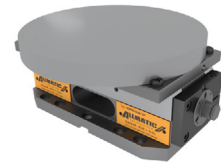
min. Spannweite/clamping range	25 mm
min. Spannweite/clamping width	73 mm



max. Spannweite/clamping range	247 mm
max. Spannweite	mindestens 150 mm oder größer
max. clamping width	at least 150 mm or larger



min. Spannweite/clamping range	Ø 80 mm
--------------------------------	---------



max. Spannweite/clamping range	Ø 250 mm
--------------------------------	----------

Trägerbacken mit Universal Gripset/Support jaws with universal gripper set **CENTRO GRIPP**



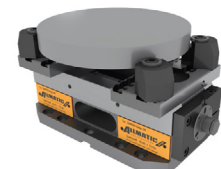
min. Spannweite/clamping range	0 mm
min. Spannweite/clamping width	88 mm



max. Spannweite/clamping range	195 mm
max. Spannweite	mindestens 165 mm oder größer
max. clamping width	at least 165 mm or larger



min. Spannweite/clamping range	Ø 100 mm
--------------------------------	----------



max. Spannweite/clamping range	Ø 230 mm
--------------------------------	----------

Range of application:

- Suitable for heavy machining work, single pieces and small batch sizes
- Designed particularly for use on conventional milling machines

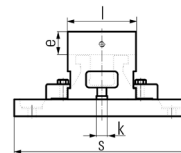
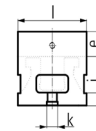
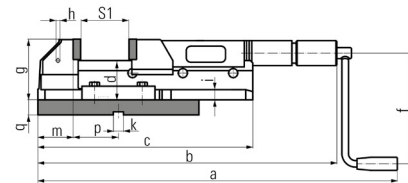
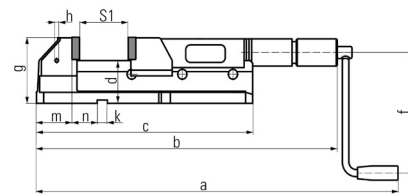
Product features:

- Clamping force preselection, 2 to 4 increments, allows accurate repetition (type 100 – 2 increments; types 125, 160 – 4 increments)
- Our tried and tested HD vice enables problem-free working with high clamping force and long-term reliability



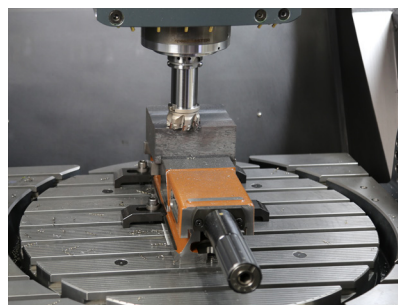
Technical data

HD / Size		100	125	160
Art.No.		6921011001055	6921021001055	69210310001055
Raw part machining				
Pre-machined part		x	x	x
Clamping range maximal	mm	162	202	302
Clamping range S1 min.	mm	0 - 82	0 - 102	0 - 152
Clamping range S2 min.	mm	78 - 162	98 - 202	147 - 302
Clamping force maximal	kN	30	40	60
Weight	kg	18	30	60
a min.	mm	520	612	717
a max.	mm	682	814	1019
b min.	mm	419	507	613
b max.	mm	581	709	915
c	mm	362	427	582
d	mm	53,5	78	85
e	mm	32	40	50
f	mm	147	178	178
g	mm	87	120	137
H	mm	M8	M8	M8
i	mm	15	21	21
k	mm	20	20	20
l	mm	100	125	160
m	mm	52	70	88
n	mm	47	50	100
p	mm	73	75	
q	mm	26	30	
s	mm	Ø 260	Ø 320	



Suitable accessories

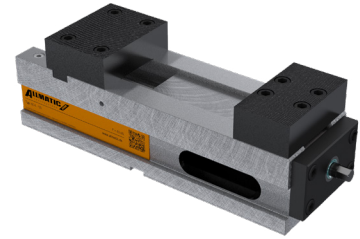
		100	125	160
Side clamps	Art.No.	6921015000231	6921025000031	6921025000031
Hand crank	Art.No.	6923015000131	6923025000131	6923025000131
Swivel base	Art.No.	6921013000044	6921023000044	
Workpiece stop	Art.No.		6921285650144	
Workpiece stop	Art.No.		6921685670042	



NC4

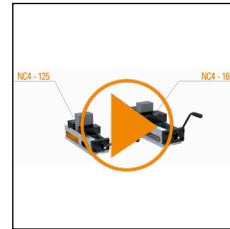
Range of application

- Ideal for use on 3-axis and 4-axis machining centres
- Jaw interface compatible with NC8 and LC/TC
- Furthermore max. 40 kN clamping force per one rotation with hand crank



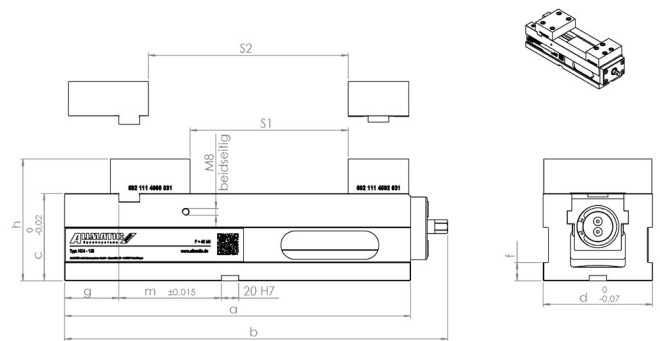
Product features:

- Clamping range 0 - 230 mm (size 125), 0 - 317 mm (size 160)
- Constant, reproducible clamping force about 40 kN/60 kN with mechanical power-assist
- Mechanical stop for safe operation
- Operation with hand crank -> 360° = 40 kN / 540° = 60 kN
- Jaw interface compatible with NC8 and LC/TC
- 1 thread per side for lateral workpiece stops M8
- Guideway inductively hardened and ground
- Evenness of basic body 0.01mm
- Height of basic body ground -0.02mm
- Aligning grooves in the base face



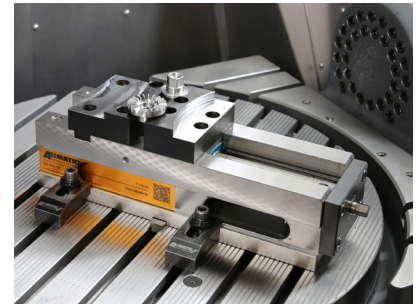
Technical data

NC4 / Size		125	160
Art.No.		6921118000055	6921128000055
Raw part machining			
Pre-machined part		x	x
Clamping range max.	mm	230	317
Clamping range S1 min.	mm	0 - 182	0 - 245
Clamping range S2 min.	mm	48 - 230	72 - 317
Clamping force max.	kN	40	60
Weight	kg	30	67
a	mm	398,5	530
b	mm	441	573
c	mm	100	115
d	mm	126	164
e	mm	21	21
g	mm	62,5	70
h	mm	139,5	164,8



Suitable accessories

		125	160
Side clamps	Art.No.	6921025000031	6921025000031
DUO side clamps	Art.No.	6921285000031	6921285000031
Hand crank	Art.No.	6921685508031	6921685508031
Console	Art.No.	6921885010042	
Workpiece stop	Art.No.	6921285650144	
Workpiece stop	Art.No.	6921685670042	



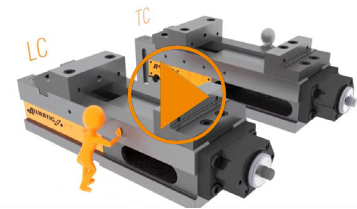
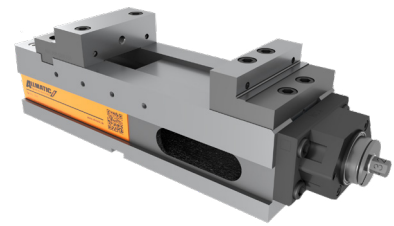
NC8

Range of application:

- Ideal for use on 3-axis and 4-axis machining centres
- For conventional clamping

Product features:

- Tool-less force setting
- Constant, reproducible clamping force with mechanical power-assist
- Proven maintenance-free and encapsulated high-pressure spindle, thus minimised cleaning requirements
- Basic body made of GJS-60
- Guideway inductively hardened and ground
- Aligning grooves in the base face
- Standard with locating holes $\varnothing 25H6 M10$ for zero-point clamping systems; inside micrometre $200\text{mm} \pm 0.01\text{mm}$ (NC8 90 & NC8 125M)
- Lateral boreholes for extension (NC8 125M/125L/160/200)
- Evenness of basic body 0.01mm
- Height of basic body ground -0.02 mm
- Width of base body ground -0.05 mm , therefore can be used laterally
- Quick-change system for add-on jaws and parallels
- Reversible jaws: for min. / max. chuck capacities with one pair of jaws
- Fixed jaw, simple programming thanks to constant zero
- Closing and opening of the complete clamping range including clamping process with a hand crank
- The total length is independent of the workpiece size
- Dimensions NC8 as for LC/TC
- Jaw interface compatible with LC/TC
- Threads per side for lateral workpiece stops M8
- Connection thread for angle drive



The NC8 family is also available in hydraulic versions!



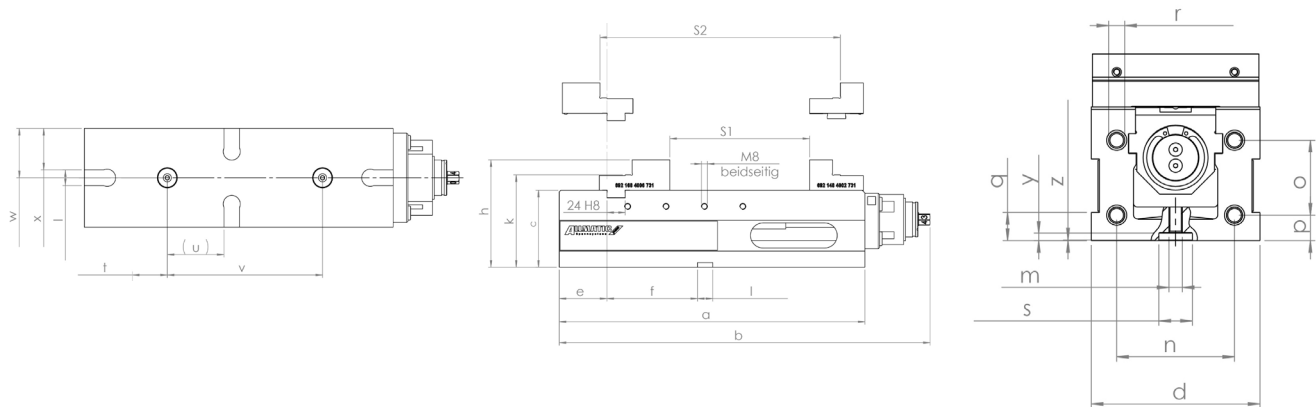
CONFIGURATE YOUR INDIVIDUAL TOMBSTONE – IN 3 STEPS ONLY!



The new configurator navigates you through the „product jungle“ in just three steps. You simply define your requirements and receive a qualified recommendation from a new, modular product range of 57 available variants in total.

www.allmatic.de/tombstone

TECHNICAL INFORMATION



NC8 / Size		90	125 M	125 L	160	200	200 Heavy Duty
Art.No.		6921908000055	6921918000055	6921918010055	6921928000055	6921928010055	6921938000055
Raw part machining							
Pre-machined part		x	x	x	x	x	x
Clamping range max.	mm	217	313	445	435	435	435
Clamping range S1 min.	mm	0 - 126	0 - 182	0 - 314	0 - 246	0 - 246	0 - 246
Clamping range S2 min.	mm	91 - 217	131 - 313	87 - 445	189 - 435	189 - 435	189 - 435
Clamping force max.	kN	28	40	40	60	60	60
Tool-less force setting		11	4	4	4	4	4
Weight	kg	15	35	43	56	60	85
a	mm	283	389	530	530	530	530
b	mm	339	483	615	615	615	615
c	mm	80	100	100	115	115	140
d	mm	90	126	126	164	164	202
e	mm	39	62	62	70	70	70
f	mm	73	118	216	164	164	164
g	mm	20	24	24	30	30	30
h	mm	114	139,5	139,5	164,8	175	200
k	mm	96	120	120	140	140	165
l	mm	20	20	20	20	20	20
m	mm	M10	M10				
n	mm		88	88	128	128	
o	mm		56	56	67	67	
p	mm		19	19	17	17	
q	mm	15	21	21	21	21	21
r	mm		M12	M12	M12	M12	M12
s	mm	∅ 25	∅ 25				
t	mm		45				
u	mm	70,5	73				
v	mm	200	200				
w	mm	45	63	63	72	72	91
x	mm	53	53	53			
y	mm	5,5	5,5				
z	mm		0,5 x 45°				

Suitable accessories

		90	125 M	125 L	160	200	200 Heavy Duty
Side clamps	Art.No.	6921015000231		6921025000031		6921025000031	6921025000031
DUO side clamps	Art.No.			6921285000031		6921285000031	6921285000031
Hand crank	Art.No.	6921685508031		6921685508031		6921685508031	6921685508031
Angular drive	Art.No.	6921905700043		6921685700543		6921685700543	6921685700543
Clamping range enlargement	Art.No.			6921685008055		6921705008055	
Console	Art.No.		6921885010042				
Workpiece stop	Art.No.				6921285650144		
Workpiece stop	Art.No.				6921685670042		



Configure your tombstone with our NC8!

www.allmatic.de/tombstone

DUO

Range of application:

- Horizontal installation – suitable for vertical CNC-controlled milling machines
- Lateral installation is also possible
- For clamping two identical parts (dimensional differences of up to ± 3 mm are compensated for)



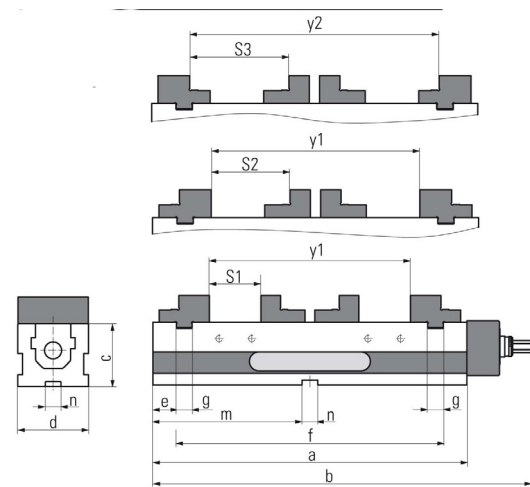
Product features:

- Extreme accuracy for your machining
- Clamping force can be preset in 4 - 6 increments. At most, 1 rotation is required to reach the max. clamping force
- Preselectable and reproducible clamping forces enable the workpiece position to be repeated within a tolerance of less than 0.01 mm
- Standard with locating holes $\varnothing 25H6 M10$ for zero-point clamping systems; Inside micrometre 200mm ± 0.01 mm (DUO 90)
- Both clamping stations must be occupied for clamping



Technical Information

DUO / Size		90	125
Art.No.		6921478000955	6921488000955
Raw part machining			
Pre-machined part		x	x
Clamping range max.	mm	306	417
Clamping range S1 min.	mm	0 - 64	0 - 89
Clamping range S2 min.	mm	31 - 55	40 - 129
Clamping range S3 min.	mm	56 - 120	82 - 171
Clamping range y1 min.	mm	256	331
Clamping range y2 min.	mm	306	417
Clamping force max.	kN	28	28
Weight	kg	24	24
a	mm	400	530
b	mm	482	640
c	mm	80	100
d	mm	90	126
e	mm	30	43,2
f	mm	340	443
g	mm	20	24
m	mm	190	255
n	mm	20	20



Suitable accessories

		90	125
Side clamps	Art.No.	6921015000231	6921025000031
DUO Side clamps	Art.No.	6921675000031	6921285000031
Hand crank	Art.No.	6921685508031	
Angular drive	Art.No.	6921485700043	
Workpiece stop	Art.No.	6921285650144	
Workpiece stop	Art.No.	6921685670042	

Configure your tombstone with our DUO 90 and DUO 125!

www.allmatic.de/tombstone



DUO PLUS 125

Range of application:

- Horizontal installation
- Suitable for conventional clamping and for gripp clamping or a combination of both
- For clamping 2 workpieces of the same or different sizes
- The support jaws enable a wide range of unmachined parts from flame-cut and sawn materials through to complex castings to be clamped securely and economically



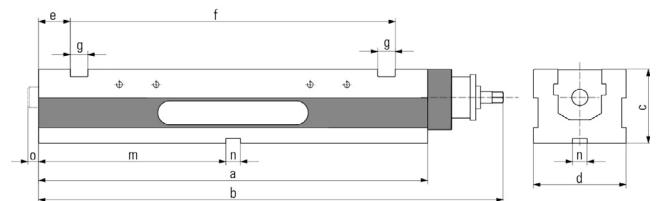
Product features:

- Clamping range adjustment for clamping two workpieces of different sizes
- Reproducible clamping forces enable excellent repeating accuracy of the workpiece position
- Mechanical power-transfer device
- Fully enclosed and maintenance-free high-pressure spindle – high chip protection, minimum cleaning requirements, constant clamping forces up to 40 kN
- Use with a torque wrench – max. 40 Nm
- Standard with locating holes \varnothing 25H6 M10 for zero-point clamping systems; Inside micrometre 200mm \pm 0.01mm



Technical information

DUO PLUS / Size	125	
Art.No.	6921438000055	
Raw part machining	x	
Pre-machined part	x	
Clamping range max.	mm	240
Clamping force max.	kN	40
Weight	kg	40
a	mm	530
b	mm	633
c	mm	100
d	mm	126
e	mm	43,2
f	mm	443
g	mm	24
m	mm	255,2
n	mm	20
o	mm	0 - 15



Suitable accessories

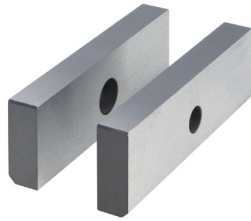
		125
Side clamps	Art.No.	6921025000031
Torque wrench	Art.No.	0651114113188
Workpiece stop	Art.No.	6921285650144
Workpiece stop	Art.No.	6921685670042



Configure your tombstone with our DUO 125!

www.allmatic.de/tombstone

JAW RANGE



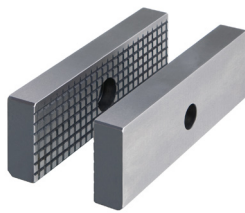
Size	100	125	160
Art.No.	6921014022031	6921024022031	6921034022031
Clamping range S1 min.	HD 0 - 82	0 - 102	0 - 152
Weight	kg 0,6	1,2	2,4
a	mm 100	125	160
b	mm 32	40	50
c	mm 12	15	20

Suitable accessories

	100	125	160
Jaw fixing bolt	Art.No. 6921011023000		

Smooth jaws (pair)

- For parts with delicate clamping surfaces
- Material: hardened steel
- Case-hardened HRC 53 ± 2; hardening depth 0,5+ 0,3



Size	100	125	160
Art.No.	6921011005031	6921021005031	6921031005031
Clamping range S1 min.	HD 0 - 82	0 - 102	0 - 152
Weight	kg 0,6	1,2	2,4
a	mm 100	125	160
b	mm 32	40	50
c	mm 12	15	20

Suitable accessories

	100	125	160
Jaw fixing bolt	Art.No. 6921011023000		

Serrated jaws (pair)

- To increase the specific contact pressure per unit area
- Material: hardened steel
- Hardened HRC 53 ± 2
- Standard jaws with small surface area



Size	125	160
Art.No.	6921024023031	6921034023031
Clamping range S1 min.	HD 0 - 84	0 - 132
Weight	kg 1,2	2,4
a	mm 125	160
b	mm 40	50
c	mm 25	30

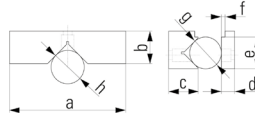
Suitable accessories

	125	160
Jaw fixing bolt	Art.No. 6921011023000	

Soft basic jaws (pair)

- Material: 21MnCr5G
- Jaws case-hardened
- For the self-production of customized jaws

JAW RANGE



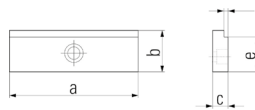
Size	100	125	160
Art.No.	6921014024031	6921024024031	6921034024031
Clamping range S1 min.	HD 0 - 143	0 - 180	0 - 275
Weight	kg 0,85	1,7	3,6
a	mm 100	125	160
b	mm 32	40	50
c	mm 30	35	45
d	mm 12	15	20
e	mm 28	35	45
f	mm 3	3	3
g	mm Ø 10 - 25	Ø 12 - 28	Ø 15 - 40
h	mm Ø 15 - 45	Ø 18 - 55	Ø 22 - 65

Suitable accessories

	100	125	160
Jaw fixing bolt	Art.No. 6921011023000		

Prismatic jaws (set)

- For horizontal and vertical clamping of round and flat workpieces
- Material: hardened steel
- Case-hardened HRC 54 + 4; hardening depth 0,6 + 0,4



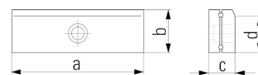
Size	100	125	160
Art.No.	6921014025031	6921024025031	6921034025031
Clamping range S1 min.	HD 7 - 88	7 - 108	7 - 158
Weight	kg 0,55	1,1	2,4
a	mm 100	125	160
b	mm 32	40	50
c	mm 12	15	20
d	mm 3	3	3
e	mm 28	35	45

Suitable accessories

	100	125	160
Jaw fixing bolt	Art.No. 6921011023000		

Step jaws (pair)

- For horizontal clamping of flat workpieces
- Material: hardened steel
- Hardened HRC 53 ± 2



Size	125	160
Art.No.	6921024005131	6921034005131
Clamping range S1 min.	HD 0 - 80	0 - 150
Weight	kg 1,85	2,4
a	mm 125	160
b	mm 40	50
c	mm 26	35,5
d	mm 35	45

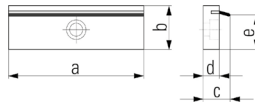
Suitable accessories

	125	160
Jaw fixing bolt	Art.No. 6921024005131 6921011023000	

Roller pull-down jaws (pair)

- Jaw parts in contact with the workpiece press the workpiece onto the support surface
- Material: hardened steel
- For parts with sensitive workpieces

JAW RANGE



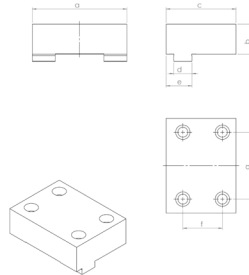
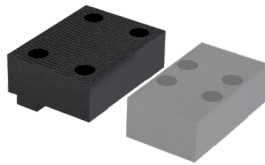
Size	125	160
Art.No.	6921024001042	6921034001042
Clamping range S1 min.	HD 0 - 92	0 - 146
Weight	kg 0,95	1,9
a	mm 125	160
b	mm 40	50
c	mm 20	23
d	mm 12	15
e	mm 33	43

Suitable accessories

		125	160
Spring leaves	Art.No.	6921024002131	6921034002131
Jaw fixing bolt	Art.No.	6921011023000	

Spring leaf pull-down jaws (pair)

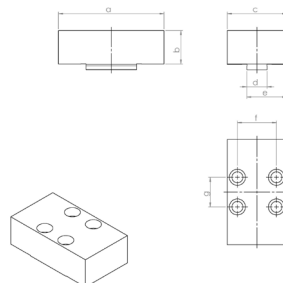
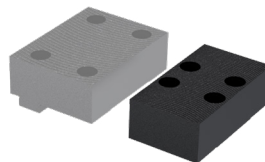
- For parts with rough clamping surfaces
- Material: hardened steel
- Spring leaves press the workpiece onto the support surface
- Spring leaves are interchangeable



Size		125	160
Art.No.		6921114006031	6921124006031
Clamping range S1 min.	NC4	0 - 182	0 - 245
Clamping range S2 min.	NC4	48 - 230	72 - 317
Weight	kg	3,5	6,65
a	mm	124,4	160,4
b	mm	39,5	49,8
c	mm	92	104
d	mm	24	30
e	mm	34	40
f	mm	52	58
g	mm	88	128

Base jaw fix

- Material: Hardened steel
- Plasma nitrided and hardened, depth 0,2 + 0,05, 720 + 50 HV10
- Both sides smooth
- Use as a mold jaw possible

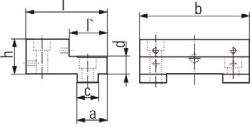


Size		125	160
Art.No.		6921114002031	6921124002031
Clamping range S1 min.	NC4	0 - 182	0 - 245
Clamping range S2 min.	NC4	48 - 230	72 - 317
Weight	kg	2,6	6,9
a	mm	124,4	160,4
b	mm	39,5	49,8
c	mm	70	114
d	mm	24	30
e	mm	47	81
f	mm	46	65
g	mm	35	60

Base jaw movable

- Material: hardened steel
- Plasma nitrided and hardened, depth 0,2 + 0,05, 720 + 50 HV10
- Both sides smooth
- Use as a mold jaw possible

JAW RANGE



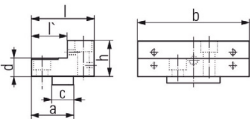
Step jaw fixed

- Material: hardened steel
- Case-hardened and tempered 680 + 80 HV30; hardening dept 0.5 +0.3
- High and step sides with thread for parallels
- Ground and polished clamping surfaces
- Additional thread on the high side for mounting HD jaws (Typ 125 – 200)
- Click system on the high side

Size		90	125	125	160	200
Art.No.		6921674006731	6921684006731	6921484006731	6921704006731	6921694006031
Clamping range S1 min.	NC4		0 - 182		0 - 246	
Clamping range S2 min.	NC4		131 - 313		189 - 435	
Clamping range S1 min.	NC8	0 - 126	0 - 182		0 - 246	0 - 246
Clamping range S2 min.	NC8	91 - 217	131 - 313		189 - 435	189 - 435
Clamping range S1 min.	TITAN SC		0 - 182			
Clamping range S2 min.	TITAN SC		131 - 313			
Clamping range S1 min.	TITAN 2K		0 - 64			
Clamping range S2 min.	TITAN 2K		83 - 195			
Clamping range S1 min.	TITAN 2M		0 - 182			
Clamping range S2 min.	TITAN 2M		131 - 313			
Clamping range S1/Slot1 min.	TITAN 2L		0 - 138			
Clamping range S1/Slot2 min.	TITAN 2L		87 - 269			
Clamping range S2/Slot1 min.	TITAN 2L		132 - 314			
Clamping range S2/Slot2 min.	TITAN 2L		263 - 445			
Clamping range S1 min.	TITAN 2 - 160				0 - 245	
Clamping range S2 min.	TITAN 2 - 160				189 - 435	
Clamping range S1 min.	DUO Plus 125/DUO 125			0 - 89		
Clamping range S2 min.	DUO Plus 125/DUO 125			40 - 129		
Clamping range S3 min.	DUO Plus 125/DUO 125			43 - 172		
Clamping range y1	DUO Plus 125/DUO 125			331		
Clamping range y2	DUO Plus 125/DUO 125			417		
Weight	kg	1,3	2,8	2,7	5	7
a	mm	30	34	55	40	70
b	mm	89,5	124,4	124,4	160,4	200,4
c	mm	20	24	24	30	30
d	mm	16	20	20	25	25
h	mm	34	39,5	39,5	49,8	60
l	mm	68	92	87	104	104
l'	mm	32	43	42	54	54

Suitable accessories

		90	125	125	160	200
Click parallels / h29 / h35 / h44	Art.No.	69211750 29042		69211850 35042	69212050 44042	
Click parallels / h16 / h20 / h25	Art.No.	69211750 16042		69211850 20042	69212050 25042	
Click parallels / h13 / h15 / h19	Art.No.	69214750 13031		69214850 15031	69213050 19031	
Click parallels / h25	Art.No.			69211850 25042		
Click parallels / h30	Art.No.			69211850 30042		



Step jaw movable

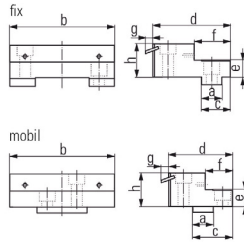
- Material: hardened steel
- Case-hardened and tempered 680 + 80 HV30; hardening dept 0.5 +0.3
- High and step sides with thread for parallels
- Ground and polished clamping surfaces
- Additional thread on the high side for mounting HD jaws (Types 125 – 200)
- Click system on the high side

Size		90	125	160	200
Art.No.		6921474002731	6921484002731	6921924002731	6921934002731
Clamping range S1 min.	NC4		0 - 182		0 - 246
Clamping range S2 min.	NC4		131 - 313		189 - 435
Clamping range S1 min.	NC8	0 - 126	0 - 182	0 - 246	0 - 246
Clamping range S2 min.	NC8	91 - 217	131 - 313	189 - 435	189 - 435
Clamping range S1 min.	TITAN SC		0 - 182		
Clamping range S2 min.	TITAN SC		131 - 313		
Clamping range S1 min.	TITAN 2K		0 - 64		
Clamping range S2 min.	TITAN 2K		83 - 195		
Clamping range S1 min.	TITAN 2M		0 - 182		
Clamping range S2 min.	TITAN 2M		131 - 313		
Clamping range S1/Slot1 min.	TITAN 2L		0 - 138		
Clamping range S1/Slot2 min.	TITAN 2L		87 - 269		
Clamping range S2/Slot1 min.	TITAN 2L		132 - 314		
Clamping range S2/Slot2 min.	TITAN 2L		263 - 445		
Clamping range S1 min.	TITAN 2 - 160			0 - 245	
Clamping range S2 min.	TITAN 2 - 160			189 - 435	
Clamping range S1 min.	DUO Plus 125/DUO 125			0 - 89	
Clamping range S2 min.	DUO Plus 125/DUO 125			40 - 129	
Clamping range S3 min.	DUO Plus 125/DUO 125			43 - 172	
Clamping range y1	DUO Plus 125/DUO 125			331	
Clamping range y2	DUO Plus 125/DUO 125			417	
Weight	kg	1	2	4,2	6,1
a	mm	38	47	63	65
b	mm	89,5	124,4	160,4	200,4
c	mm	20	24	30	30
d	mm	16	20	25	25
h	mm	34	39,5	49,8	60
l	mm	56	70	114	115
l'	mm	31	40	64	66

Suitable accessories

		90	125	160	200
Click parallels / h29 / h35 / h44	Art.No.	69211750 29042	69211850 35042	69212050 44042	
Click parallels / h16 / h20 / h25	Art.No.	69211750 16042	69211850 20042	69212050 25042	
Click parallels / h13 / h15 / h19	Art.No.	69214750 13031	69214850 15031	69213050 19031	
Click parallels / h25	Art.No.		69211850 25042		
Click parallels / h30	Art.No.		69211850 30042		

JAW RANGE



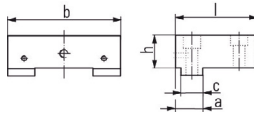
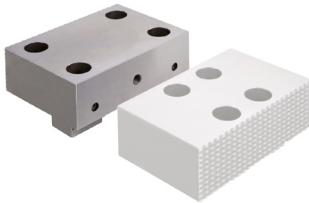
Pull-down jaw fixed

- Material: hardened steel
- Case-hardened and tempered 680 + 80 HV30; hardening depth 0.5 +0.3
- Pull-down with ground and polished spring leaves for pre-machined and unmachined workpieces
- Ground and polished clamping surfaces
- High clamping accuracy for parallel and accurate angle machining
- Click system on the high side

Size	125 fixed	125 movable	
Art.No.	6921684106031	6921684102031	
Clamping range S1 min.	NC4	0 - 159	
Clamping range S2 min.	NC4	0 - 176	
Clamping range S3 min.	NC4	124 - 305	
Clamping range S1 min.	NC8	0 - 159	
Clamping range S2 min.	NC8	0 - 176	
Clamping range S3 min.	NC8	124 - 305	
Clamping range S1 min.	TITAN SC	0 - 159	
Clamping range S2 min.	TITAN SC	0 - 176	
Clamping range S3 min.	TITAN SC	124 - 305	
Clamping range S1 min.	TITAN 2K	0 - 41	
Clamping range S2 min.	TITAN 2K	0 - 58	
Clamping range S3 min.	TITAN 2K	75 - 187	
Clamping range S1 min.	TITAN 2M	0 - 159	
Clamping range S2 min.	TITAN 2M	0 - 176	
Clamping range S3 min.	TITAN 2M	124 - 305	
Clamping range S1/Slot 1 min.	TITAN 2L	0 - 115	
Clamping range S1/Slot 2 min.	TITAN 2L	0 - 132	
Clamping range S1/Slot 3 min.	TITAN 2L	80 - 261	
Clamping range S2/Slot 1 min.	TITAN 2L	109 - 291	
Clamping range S2/Slot 2 min.	TITAN 2L	126 - 308	
Clamping range S2/Slot 3 min.	TITAN 2L	255 - 437	
Weight	kg	2,82	2,41
a	mm	24	24
b	mm	124,4	124,4
c	mm	34	46,5
d	mm	92	75
e	mm	20	20
f	mm	43	32
g	mm	8,8	8,5
h	mm	39,5	39,5

Suitable accessories

Spring leaves	Art.No.	125
		6921684103031



Hard basic jaw fixed

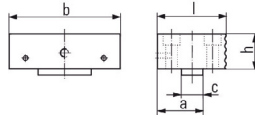
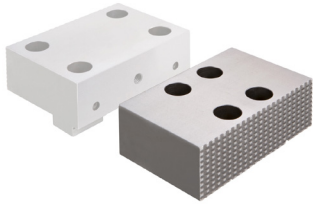
- Material: hardened steel
- Case-hardened and tempered 680 + 80 HV30; hardening depth 0.5 +0.3
- 6921684005731 and 6921704005731 one side smooth, ground and polished; one side serrated
- Additional thread for parallels and for mounting HD jaws on the smooth side
- Mounts for Click system on both sides of the jaw

Size	125	125	160	
Art.No.	6921684005731	6921284005231	6921704005731	
Clamping range S1 min.	NC4	0 - 179	74 - 310	
Clamping range S2 min.	NC4	49 - 231	20 - 257	
Clamping range S1 min.	NC8	0 - 179	15 - 261	
Clamping range S2 min.	NC8	49 - 231	69 - 315	
Clamping range S1 min.	TITAN SC	0 - 179		
Clamping range S2 min.	TITAN SC	49 - 231		
Clamping range S1 min.	TITAN 2K	0 - 61		
Clamping range S2 min.	TITAN 2K	0 - 113		
Clamping range S1 min.	TITAN 2M	0 - 179		
Clamping range S2 min.	TITAN 2M	49 - 231		
Clamping range S1/Slot 1 min.	TITAN 2L	0 - 135		
Clamping range S1/Slot 2 min.	TITAN 2L	129 - 311		
Clamping range S2/Slot 1 min.	TITAN 2L	5 - 187		
Clamping range S2/Slot 2 min.	TITAN 2L	181 - 363		
Clamping range S1 min.	DUO Plus 125/DUO 125		0 - 86	
Clamping range y1	DUO Plus 125/DUO 125		331	
Weight	kg	3	3,6	6,65
a	mm	30	56	40
b	mm	124,4	124,4	160,4
c	mm	24	24	30
h	mm	39,5	39,5	49,8
l	mm	88		104

Suitable accessories

Click parallels / h35 / h44	Art.No.	125	125	160
		6921185035042		6921205044042
Click parallels / h20 / h25	Art.No.	6921185020042		6921205025042
Click parallels / h15 / h19	Art.No.	6921485015031		6921305019031
Click parallels / h25	Art.No.	6921185025042		
Click parallels / h30	Art.No.	6921185030042		

JAW RANGE



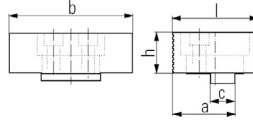
Hard basic jaw movable

- Material: hardened steel
- Case-hardened and tempered 680 + 80 HV30; hardening depth 0.5 +0.3
- One side smooth, ground and polished; one side serrated
- Additional thread for parallels and for mounting HD jaws on the smooth side
- Mounts for Click system on both sides of the jaw

Size		125	160
Art.No.		6921684004731	6921704004731
Clamping range S1 min.	NC4	0 - 173	74 - 310
Clamping range S2 min.	NC4	50 - 225	20 - 257
Clamping range S1 min.	NC8	0 - 173	15 - 261
Clamping range S2 min.	NC8	50 - 225	69 - 315
Clamping range S1 min.	TITAN SC	0 - 173	
Clamping range S2 min.	TITAN SC	50 - 225	
Clamping range S1 min.	TITAN 2K	0 - 61	
Clamping range S2 min.	TITAN 2K	0 - 113	
Clamping range S1 min.	TITAN 2M	0 - 179	
Clamping range S2 min.	TITAN 2M	49 - 231	
Clamping range S1/Slot 1 min.	TITAN 2L	0 - 135	
Clamping range S1/Slot 2 min.	TITAN 2L	129 - 311	
Clamping range S2/Slot 1 min.	TITAN 2L	5 - 187	
Clamping range S2/Slot 2 min.	TITAN 2L	181 - 363	
Clamping range S1 min.	DUO Plus 125/ DUO 125	0 - 86	
Clamping range y1	DUO Plus 125/ DUO 125	331	
Weight	kg	3	6,5
a	mm	50	65
b	mm	124,4	160,4
c	mm	24	30
h	mm	39,5	49,8
l	mm	76	100

Suitable accessoires

		125	160
Click parallels / h35 / h44	Art.No.	6921185035042	6921205044042
Click parallels / h20 / h25	Art.No.	6921185020042	6921205025042
Click parallels / h15 / h19	Art.No.	6921485015031	6921305019031
Click parallels / h25	Art.No.	6921185025042	
Click parallels / h30	Art.No.	6921185030042	



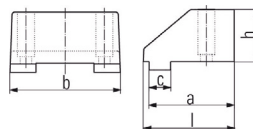
Pivot jaw, movable

- Material: hardened steel
- Case-hardened and tempered 680 + 80 HV30; hardening depth 0.5 +0.3
- One side smooth, ground and polished; one side serrated
- Rotatable through 360°
- Mounts for Click system on both sides of the jaw

Baugröße		90	125	160	200
Art.Nr.		6921674012231	6921684012231	6921704012231	6921694012231
Spannweite S1 min.	NC4		64 - 246	88 - 334	
Spannweite S2 min.	NC4		45 - 227	68 - 314	
Spannweite S1 min.	NC8	62 - 186	64 - 246	88 - 334	92 - 338
Spannweite S2 min.	NC8	26 - 152	45 - 227	68 - 314	68 - 314
Spannweite S1 min.	TITAN SC		51 - 226		
Spannweite S2 min.	TITAN SC		70 - 245		
Spannweite S1 min.	TITAN 2K		64 - 128		
Spannweite S2 min.	TITAN 2K		0 - 109		
Spannweite S1 min.	TITAN 2M		64 - 246		
Spannweite S2 min.	TITAN 2M		45 - 227		
Spannweite S1/Slot1 min.	TITAN 2L		64 - 202		
Spannweite S1/Slot2 min.	TITAN 2L		198 - 378		
Spannweite S2/Slot1 min.	TITAN 2L		0 - 183		
Spannweite S2/Slot2 min.	TITAN 2L		177 - 358		
Spannweite S1 min.	TITAN 2 - 160			71 - 313	
Spannweite S2 min.	TITAN 2 - 160			91 - 334	
Gewicht	kg	1,6	3,8	7,4	10,5
a	mm	56	77	89	89
b	mm	90	128	164	202
c	mm	20	24	30	30
d	mm	16	20	24	24
h	mm	46	58	73	85
l	mm	66	85	100	100
f	mm	30	32	34	34

Passendes Zubehör

		90	125	160	200
Stufenleisten / h29 / h35 / h 44	Art.Nr.	6921175029042	6921185035042	6921205044042	
Stufenleisten / h16 / h20 / h25	Art.Nr.	6921175016042	6921185020042	6921205025042	
Stufenleisten / h13 / h15 / h19	Art.Nr.	6921475013031	6921485015031	6921305019031	
Stufenleisten / h25	Art.Nr.		6921185025042		
Stufenleisten / h30	Art.Nr.		6921185030042		

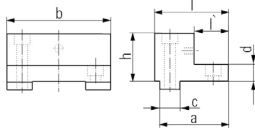
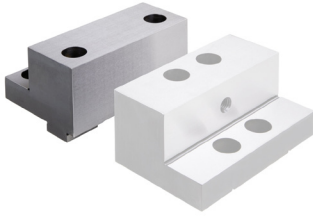


Soft jaw fixed

- Material: GGG40
- For production of special jaws by the customer
- Chamfer provides very good accessibility to the workpiece

Size		125 fix	125 mobil
Art.No.		6921684088031	6921484087031
Clamping range S1 min.	NC4	0 - 150	0 - 150
Clamping range S1 min.	NC8	0 - 150	0 - 150
Clamping range S1 min.	TITAN SC	0 - 150	0 - 150
Clamping range S1 min.	TITAN 2K	0 - 32	0 - 32
Clamping range S1 min.	TITAN 2M	0 - 150	0 - 150
Clamping range S1/Slot1 min.	TITAN 2L	0 - 106	0 - 106
Clamping range S2/Slot1 min.	TITAN 2L	100 - 282	100 - 282
Weight	kg	4,2	3,8
a	mm	95	42
b	mm	124	124
c	mm	24	24
h	mm	58	58
l	mm	101,5	94,5

JAW RANGE



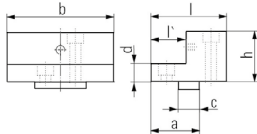
Master jaw adapter

- Material: hardened steel
- Case-hardened and tempered 680 + 80 HV30; hardening dept 0.5 +0.3
- Ground and polished clamping surfaces
- Additional thread for mounting HD jaws
- Click system on the high side

Size		90	125	160	200
Art.No.		6921674012231	6921684012231	6921704012231	6921694012231
Clamping range S1 min.	NC4		64 - 246	88 - 334	
Clamping range S2 min.	NC4		45 - 227	68 - 314	
Clamping range S1 min.	NC8	62 - 186	64 - 246	88 - 334	92 - 338
Clamping range S2 min.	NC8	26 - 152	45 - 227	68 - 314	68 - 314
Clamping range S1 min.	TITAN SC		51 - 226		
Clamping range S2 min.	TITAN SC		70 - 245		
Clamping range S1 min.	TITAN 2K		64 - 128		
Clamping range S2 min.	TITAN 2K		0 - 109		
Clamping range S1 min.	TITAN 2M		64 - 246		
Clamping range S2 min.	TITAN 2M		45 - 227		
Clamping range S1/Slot1 min.	TITAN 2L		64 - 202		
Clamping range S1/Slot2 min.	TITAN 2L		196 - 378		
Clamping range S2/Slot1 min.	TITAN 2L		0 - 183		
Clamping range S2/Slot2 min.	TITAN 2L		177 - 359		
Clamping range S1 min.	TITAN 2 - 160			71 - 313	
Clamping range S2 min.	TITAN 2 - 160			91 - 334	
Weight	kg	1,6	3,8	7,4	10,5
a	mm	56	77	89	89
b	mm	90	126	164	202
c	mm	20	24	30	30
d	mm	16	20	24	24
h	mm	46	58	73	85
l	mm	66	85	100	100
l'	mm	30	32	34	34

Suitable accessories

		90	125	160	200
Click parallels / h29 / h35 / h44	Art.No.	69211750 29 042	69211850 35 042	69212050 44 042	
Click parallels / h16 / h20 / h25	Art.No.	69211750 16 042	69211850 20 042	69212050 25 042	
Click parallels / h13 / h15 / h19	Art.No.	69214750 13 031	69214850 15 031	69213050 19 031	
Click parallels / h25	Art.No.		69211850 25 042		
Click parallels / h30	Art.No.		69211850 30 042		



Master jaw adapter movable

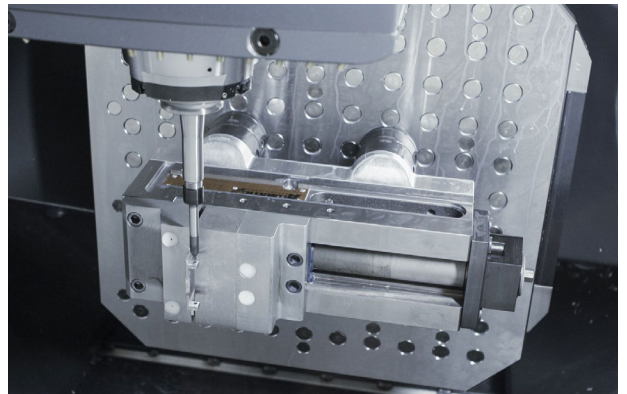
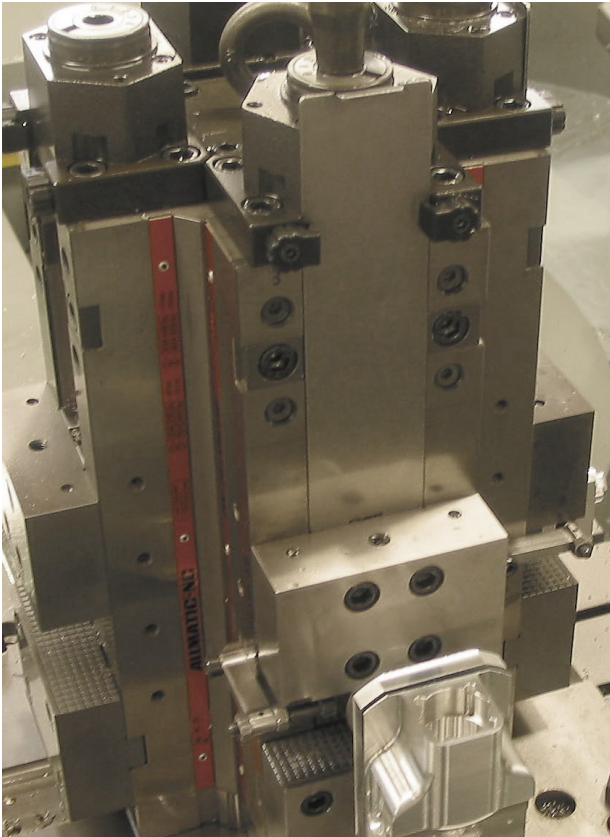
- Material: hardened steel
- Case-hardened and tempered 680 + 80 HV30; hardening dept 0.5 +0.3
- Ground and polished clamping surfaces
- Additional thread for mounting HD jaws
- Click system on the high side

Size		90	125	160	200
Art.No.		6921274011231	6921284011231	6921304011231	6921294011231
Clamping range S1 min.	NC4		71 - 243	88 - 334	
Clamping range S2 min.	NC4		47 - 224	68 - 314	
Clamping range S1 min.	NC8	62 - 186	71 - 243	88 - 334	92 - 338
Clamping range S2 min.	NC8	26 - 152	47 - 224	68 - 314	68 - 314
Clamping range S1 min.	TITAN SC		71 - 243		
Clamping range S2 min.	TITAN SC		47 - 224		
Clamping range S1 min.	TITAN 2K		64 - 128		
Clamping range S2 min.	TITAN 2K		0 - 109		
Clamping range S1 min.	TITAN 2M		64 - 246		
Clamping range S2 min.	TITAN 2M		45 - 227		
Clamping range S1/Slot1 min.	TITAN 2L		64 - 202		
Clamping range S1/Slot2 min.	TITAN 2L		196 - 378		
Clamping range S2/Slot1 min.	TITAN 2L		0 - 183		
Clamping range S2/Slot2 min.	TITAN 2L		177 - 359		
Clamping range y1 min.	DUO Plus 125/DUO 125		331		
Clamping range y2 min.	DUO Plus 125/DUO 125		401		
Clamping range S1 min.	DUO Plus 125/DUO 125		0 - 84		
Clamping range S2 min.	DUO Plus 125/DUO 125		28 - 117		
Clamping range S3 min.	DUO Plus 125/DUO 125		77 - 166		
Clamping range S1 min.	TITAN 2 - 160			71 - 313	
Clamping range S2 min.	TITAN 2 - 160			91 - 334	
Weight	kg	1,45	3,6	7,6	10,2
a	mm	40	52	65	65
b	mm	90	126	164	202
c	mm	20	24	30	30
d	mm	16	20	24	24
h	mm	46	58	73	85
l	mm	60	80	100	100
l'	mm	30	32	34	38

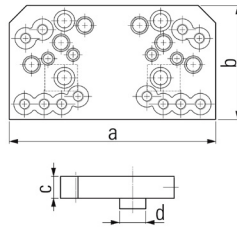
Suitable accessories

		90	125	160	200
Click parallels / h29 / h35 / h44	Art.No.	69211750 29 042	69211850 35 042	69212050 44 042	
Click parallels / h16 / h20 / h25	Art.No.	69211750 16 042	69211850 20 042	69212050 25 042	
Click parallels / h13 / h15 / h19	Art.No.	69214750 13 031	69214850 15 031	69213050 19 031	
Click parallels / h25	Art.No.		69211850 25 042		
Click parallels / h30	Art.No.		69211850 30 042		

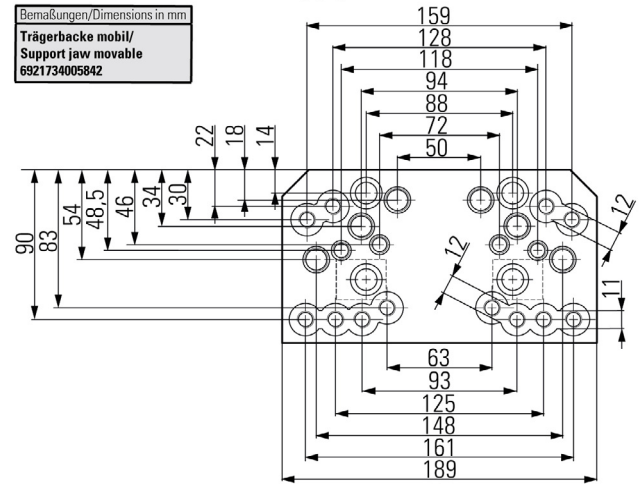
APPLICATIONS



JAW RANGE GRIPP



Bemaßung der einzelnen Gripp-Positionen/ Dimensions of each Gripp positions



Support jaw fixed

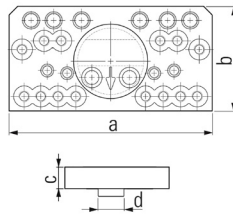
- Material: hardened steel
- Case-hardened and tempered 600 + 50 HV10; hardening depth = 0,2
- For mounting various pull-down wedge elements (the pull-down clamping we recommend only for the TITAN 2 K, M and L), universal grippset and gripp-studs with thread (pointed/smooth)
- Front surface can be used as clamping surface (hardened and ground)
- Scope of delivery without clamping elements

Size		125	125	125	160	160	160
Art.No.		6921734005842 with pull-down set	6921734005842 with universal grippset	6921734005842 with gripp-studs	6921884005042 with pull-down set	6921884005042 with universal grippset	6921884005042 with gripp-studs
Clamping range rectangular WP	TITAN SC	28 - 320	25 - 310	28 - 320			
Clamping range round WP	TITAN SC	Ø 70 - Ø 330	Ø 70 - Ø 330	Ø 70 - Ø 330			
Clamping range rectangular WP	TITAN 2K	28 - 202	25 - 192	28 - 202			
Clamping range round WP	TITAN 2K	Ø 70 - Ø 240	Ø 70 - Ø 240	Ø 70 - Ø 240			
Clamping range rectangular WP	TITAN 2M	28 - 320	25 - 310	28 - 320			
Clamping range round WP	TITAN 2M	Ø 70 - Ø 330	Ø 70 - Ø 330	Ø 70 - Ø 330			
Clamping range rectangular WP	TITAN 2L	28 - 452	25 - 442	28 - 452			
Clamping range round WP	TITAN 2L	Ø 70 - Ø 330	Ø 70 - Ø 330	Ø 70 - Ø 330			
Clamping range rectangular WP	TITAN 2-160				47 - 421	34 - 426	33 - 493
Clamping range round WP	TITAN 2-160				Ø 120 - Ø 450	Ø 120 - Ø 450	Ø 75 - Ø 450
Clamping range rectangular WP	NC8 125 M Hydro	28 - 320	25 - 310	28 - 320			
Clamping range round WP	NC8 125 M Hydro	Ø 70 - Ø 330	Ø 70 - Ø 330	Ø 70 - Ø 330			
Clamping range rectangular WP	NC8 125 L Hydro	28 - 452	25 - 442	28 - 452			
Clamping range round WP	NC8 125 L Hydro	Ø 70 - Ø 330	Ø 70 - Ø 330	Ø 70 - Ø 330			
Weight	kg	2,8	2,8	2,8	4,8	4,8	4,8
a	mm	189	189	189	250	250	250
b	mm	104	104	104	122,5	122,5	122,5
c	mm	20	20	20	25	25	25
d	mm	24	24	24	30	30	30

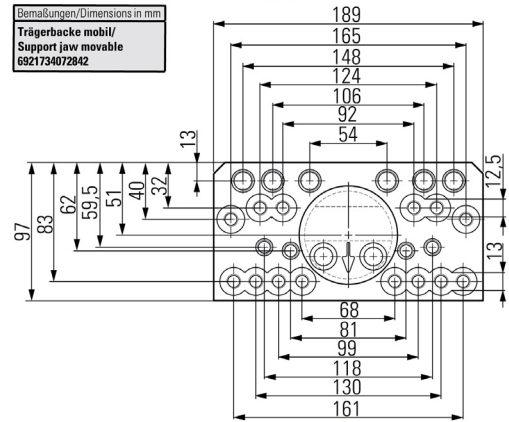
Suitable accessories

		125	125	125	160	160	160
Pull-down set case, high	Art.Nr.	6921734027131					
Pull-down set case, low	Art.Nr.	6921734027031					
Pull-down set case	Art.Nr.				6921734027231		
Universal grippset	Art.Nr.		6921884027031			6921884027031	
Gripp-stud 2-spike h6,7	Art.Nr.			6921884036000			6921884036000
Gripp-stud 2-spike h5,2	Art.Nr.			6921884036100			6921884036100
Gripp-stud carbide 2-spike 8,6	Art.Nr.			6921884036841			6921884036841
Gripp-stud flat carbide coated h6,7	Art.Nr.			6921884037000			6921884037000
Gripp-stud 2-spike h9,7	Art.Nr.			6921884036200			6921884036200
Gripp-stud 4-spike h5,2	Art.Nr.			6921884036300			6921884036300
Gripp-stud round h5,5	Art.Nr.			6921884038000			6921884038000

JAW RANGE GRIPP



Bemaßung der einzelnen Gripp-Positionen/ Dimensions of each Gripp positions



Size	125	160
Art.No.	6921734072842	6921844072042
Weight	kg 2,8	kg 4,8
a	mm 189	mm 250
b	mm 104	mm 132
c	mm 20	mm 25
d	mm 24	mm 30

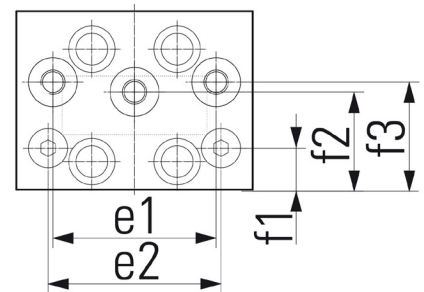
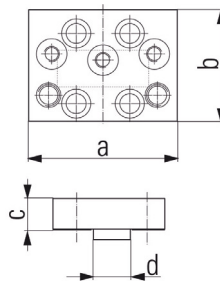
Support jaw movable, pivot

- Material: hardened steel
- Case-hardened and tempered 600 + 50 HV10; hardening depth = 0,2
- For mounting various pull-down wedge elements (the pull-down clamping is recommended for the TITAN 2 K, M and L), universal gripp set and gripp-studs with thread (pointed/smooth)
- Front surface can be used as clamping surface (hardened and ground)

Pivot jaw

- For clamping uneven workpieces
- To compensate for non-parallel clamping surfaces
- Supplied without clamping elements

For clamping range and accessories:
go to support jaw fixed page 32



Support jaw movable, rigid

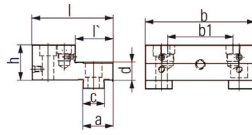
- Material: hardened steel
- Case-hardened and tempered 600 + 50 HV10; hardening depth = 0,2
- For mounting various studs (pointed/smooth) or a universal gripper set
- For three-point clamping
- Front surface can be used as clamping surface (hardened, ground and polished)
- Studs (pointed/smooth) and gripper set not included

Size	125	
Art.No.	6921884004842	
Clamping range rectangular WP	TITAN SC	25 - 310
Clamping range round WP	TITAN SC	Ø 100 - Ø 320
Clamping range rectangular WP	TITAN 2K	25 - 184
Clamping range round WP	TITAN 2K	Ø 70 - Ø 210
Clamping range rectangular WP	TITAN 2M	25 - 310
Clamping range round WP	TITAN 2M	Ø 100 - Ø 320
Clamping range rectangular WP	TITAN 2L	25 - 442
Clamping range round WP	TITAN 2L	Ø 100 - Ø 330
Clamping range rectangular WP	NC8 125 M Hydro	25 - 310
Clamping range round WP	NC8 125 M Hydro	Ø 100 - Ø 320
Clamping range rectangular WP	NC8 125 L Hydro	25 - 442
Clamping range round WP	NC8 125 L Hydro	Ø 100 - Ø 330
Weight	kg	1,2
a	mm	97
b	mm	73
c	mm	20
d	mm	24
Gripp position e1	mm	67
Gripp position e2	mm	71
Gripp position f1	mm	17
Gripp position f2	mm	40
Gripp position f3	mm	44

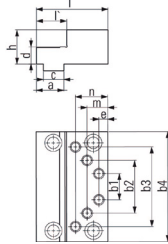
For accessories: go to support jaw fixed page 32

JAW RANGE GRIPP

6921884051031



6921844051031



Step jaw fixed for gripp-studs

- Material: hardened steel
- Case-hardened and tempered 680 + 80 HV30; hardening depth 0.5 +0.3
- High and step sides with thread for parallels
- Ground clamping surfaces
- Suitable for screw-in gripp-studs
- First and second clamping steps are possible without changing jaws
- Click system on the high side

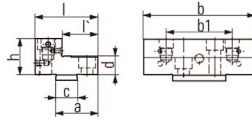
Note: because the jaws have no pendulum, they are only suitable for rectangular workpieces (Saw cuts) $// \leq 0,5 \text{ mm}$ (Parallelism less or equal 0.5 mm) respectively cylindrical workpieces $\bigcirc \leq 0,5 \text{ mm}$ (unit less or equal 0.5)

Size		125	160
Art.No.		6921884051031	6921844051031
Clamping range S1 min.	TITAN SC	0 - 182	
Clamping range S2 min.	TITAN SC	49 - 226	
Clamping range S2 round WP	TITAN SC	Ø 88 - 220	
Clamping range S3	TITAN SC	131 - 313	
Clamping range S4	TITAN SC	157 - 334	
Clamping range S1 min.	TITAN 2K	0 - 64	
Clamping range S2 min.	TITAN 2K	49 - 108,5	
Clamping range S2 round WP	TITAN 2K	Ø 88 - 220	
Clamping range S3	TITAN 2K	131 - 313	
Clamping range S4	TITAN 2K	157 - 334	
Clamping range S1 min.	TITAN 2M	0 - 182	
Clamping range S2 min.	TITAN 2M	49 - 226	
Clamping range S2 round WP	TITAN 2M	Ø 88 - 220	
Clamping range S3	TITAN 2M	131 - 313	
Clamping range S4	TITAN 2M	157 - 334	
Clamping range S1/Slot1 min.	TITAN 2L	0 - 138	
Clamping range S1/Slot2 min.	TITAN 2L	132 - 314	
Clamping range S2/Slot1 min.	TITAN 2L	49 - 182	
Clamping range S2/Slot2 min.	TITAN 2L	176 - 358	
Clamping range S2 runde WK	TITAN 2L	Ø 88 - 220	
Clamping range S3/Slot1 min.	TITAN 2L	87 - 269	
Clamping range S3/Slot2 min.	TITAN 2L	263 - 445	
Clamping range S4/Slot1 min.	TITAN 2L	113 - 290	
Clamping range S4/Slot2 min.	TITAN 2L	284 - 466	
Clamping range S1 min.	TITAN 2 - 160		0 - 245
Clamping range S2 min.	TITAN 2 - 160		24 - 264
Clamping range S2 round WP	TITAN 2 - 160		Ø 55 - 400
Clamping range S3	TITAN 2 - 160		179 - 425
Clamping range S4	TITAN 2 - 160		227 - 468
Clamping range S1 min.	NC8 125 M Hydro	0 - 182	
Clamping range S2 min.	NC8 125 M Hydro	49 - 226	
Clamping range S2 round WP	NC8 125 M Hydro	Ø 88 - 220	
Clamping range S3	NC8 125 M Hydro	131 - 313	
Clamping range S4	NC8 125 M Hydro	157 - 334	
Clamping range S1/Slot1 min.	NC8 125 L Hydro	0 - 138	
Clamping range S1/Slot2 min.	NC8 125 L Hydro	132 - 314	
Clamping range S2/Slot1 min.	NC8 125 L Hydro	49 - 182	
Clamping range S2/Slot2 min.	NC8 125 L Hydro	176 - 358	
Clamping range S2 runde WK	NC8 125 L Hydro	Ø 88 - 220	
Clamping range S3/Slot1 min.	NC8 125 L Hydro	87 - 269	
Clamping range S3/Slot2 min.	NC8 125 L Hydro	263 - 445	
Clamping range S4/Slot1 min.	NC8 125 L Hydro	113 - 290	
Clamping range S4/Slot2 min.	NC8 125 L Hydro	284 - 466	
Weight	kg	2,8	4,8
a	mm	34	40
b	mm	124,4	
b1	mm	74	38
b2	mm		77
b3	mm		116
b4	mm		160,4
c	mm		30
d	mm		25
e	mm		13
h	mm	24	49,8
l	mm	20	104
l'	mm	39,5	44
m	mm	92	47
n	mm	43	30

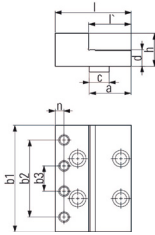
Suitable accessories

		125	160
Click parallels h35	Art.No.	6921185035042	
Click parallels h20	Art.No.	6921185020042	
Click parallels h15	Art.No.	6921485015031	
Click parallels h25	Art.No.	6921185025042	
Click parallels l h30	Art.No.	6921185030042	
Click parallels h44	Art.No.		6921205044042
Click parallels h25	Art.No.		6921205025042
Click parallels h19	Art.No.		6921305019031
Gripp-stud 2-spike h6,7	Art.No.	6921884036000	
Gripp-stud 2-spike h5,2	Art.No.	6921884036100	
Gripp-stud carbide 2-spike h8,6	Art.No.	6921884036841	
Gripp-stud flat carbide coated h6,7	Art.No.	6921884037000	
Gripp-stud 2-spike h9,7	Art.No.	6921884036200	
Gripp-stud 4-spike h5,2	Art.No.	6921884036300	
Gripp-stud round h5,5	Art.No.	6921884038000	

6921844050031



6921844050031



Step jaw movable for gripp-studs

- Material: hardened steel
- Hardened 680 +80 HV30; hardening depth: 0,5 + 0,3
- High and step sides with thread for parallels
- Additional thread on the high side for mounting the HD jaws (Typ 125 – 200)
- Suitable for screw-in gripp-studs
- First and second clamping steps are possible without changing jaws
- Click system on the high side

Note: because the jaws have no pendulum, they are only suitable for rectangular workpieces (Saw cuts) $// \leq 0,5 \text{ mm}$ (Parallelism less or equal 0.5 mm) respectively cylindrical workpieces $\bigcirc \leq 0,5 \text{ mm}$ (unit less or equal 0.5)

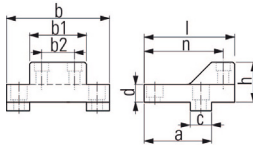
Size		125	160
Art.No.		6921844050031	6921844050031
Clamping range S1 min.	TITAN SC	0 - 182	
Clamping range S2 min.	TITAN SC	49 - 226	
Clamping range S2 round WP	TITAN SC	Ø 88 - 220	
Clamping range S3	TITAN SC	131 - 313	
Clamping range S4	TITAN SC	157 - 334	
Clamping range S1 min.	TITAN 2K	0 - 64	
Clamping range S2 min.	TITAN 2K	49 - 108,5	
Clamping range S2 round WP	TITAN 2K	Ø 88 - 220	
Clamping range S3	TITAN 2K	131 - 313	
Clamping range S4	TITAN 2K	157 - 334	
Clamping range S1 min.	TITAN 2M	0 - 182	
Clamping range S2 min.	TITAN 2M	49 - 226	
Clamping range S2 round WP	TITAN 2M	Ø 88 - 220	
Clamping range S3	TITAN 2M	131 - 313	
Clamping range S4	TITAN 2M	157 - 334	
Clamping range S1/Slot1 min.	TITAN 2L	0 - 138	
Clamping range S1/Slot2 min.	TITAN 2L	132 - 314	
Clamping range S2/Slot1 min.	TITAN 2L	49 - 182	
Clamping range S2/Slot2 min.	TITAN 2L	176 - 358	
Clamping range S2 round WP	TITAN 2L	Ø 88 - 220	
Clamping range S3/Slot1 min.	TITAN 2L	87 - 269	
Clamping range S3/Slot2 min.	TITAN 2L	263 - 445	
Clamping range S4/Slot1 min.	TITAN 2L	113 - 290	
Clamping range S4/Slot2 min.	TITAN 2L	284 - 466	
Clamping range S1 min.	TITAN 2 - 160		0 - 245
Clamping range S2 min.	TITAN 2 - 160		24 - 264
Clamping range S2 round WP	TITAN 2 - 160		Ø 55 - 400
Clamping range S3	TITAN 2 - 160		179 - 425
Clamping range S4	TITAN 2 - 160		227 - 468
Clamping range S1 min.	NC8 125 M Hydro	0 - 182	
Clamping range S2 min.	NC8 125 M Hydro	49 - 226	
Clamping range S2 round WP	NC8 125 M Hydro	Ø 88 - 220	
Clamping range S3	NC8 125 M Hydro	131 - 313	
Clamping range S4	NC8 125 M Hydro	157 - 334	
Clamping range S1/Slot1 min.	NC8 125 L Hydro	0 - 138	
Clamping range S1/Slot2 min.	NC8 125 L Hydro	132 - 314	
Clamping range S2/Slot1 min.	NC8 125 L Hydro	49 - 182	
Clamping range S2/Slot2 min.	NC8 125 L Hydro	176 - 358	
Clamping range S2 round WP	NC8 125 L Hydro	Ø 88 - 220	
Clamping range S3/Slot1 min.	NC8 125 L Hydro	87 - 269	
Clamping range S3/Slot2 min.	NC8 125 L Hydro	263 - 445	
Clamping range S4/Slot1 min.	NC8 125 L Hydro	113 - 290	
Clamping range S4/Slot2 min.	NC8 125 L Hydro	284 - 466	
Weight	kg	2,8	4,8
a	mm	47	63
b	mm	124,4	
b1	mm	74	160,4
b2	mm		116
b3	mm		38
c	mm	24	30
d	mm	20	25
h	mm	39,5	49,8
l	mm	70	114
l'	mm	40	64
n	mm		13

Accessories: go to step jaw fixed for gripper studs page 34

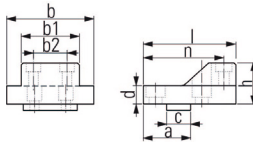


JAW RANGE GRIPP

6921834040140



6921834040040



Reduced-width jaw for gripp-studs

- Material: hardened steel
- Case-hardened and tempered 600 + 50 HV10; hardening depth = 0,2
- Allows unhindered access to the workpiece, even with short tools
- For clamping small to medium-sized workpieces
- Suitable for screw-in gripp-studs
- First and second clamping steps are possible without changing jaws
- Click system on the high side

Note: The movable jaw has no pendulum compensation. It is suitable for rectangular workpieces (saw cuts) $l/l \leq 0.5$ (concurrency less or equal to 0.5 mm) or cylindrical workpieces $\bigcirc \leq 0.5$ (roundness less or equal to 0.5 mm)

Size	125 fixed	125 movable	
Art.No.	6921834040140	6921834040040	
Clamping range S1 min.	TITAN SC	31 - 210	
Clamping range S2 min.	TITAN SC	123 - 300	
Clamping range S3 min.	TITAN SC	173 - 350	
Clamping range S4 min.	TITAN SC	25 - 203	
Clamping range S5 min.	TITAN SC	165 - 343	
Clamping range S1 min.	TITAN 2K	23 - 92	
Clamping range S2 min.	TITAN 2K	91 - 182	
Clamping range S3 min.	TITAN 2K	167 - 232	
Clamping range S4 min.	TITAN 2K	15 - 85	
Clamping range S5 min.	TITAN 2K	159 - 225	
Clamping range S1 min.	TITAN 2M	31 - 210	
Clamping range S2 min.	TITAN 2M	123 - 300	
Clamping range S3 min.	TITAN 2M	173 - 350	
Clamping range S4 min.	TITAN 2M	25 - 203	
Clamping range S5 min.	TITAN 2M	165 - 343	
Clamping range S1/Slot1 min.	TITAN 2L	23 - 166	
Clamping range S1/Slot2 min.	TITAN 2L	160 - 342	
Clamping range S2/Slot1 min.	TITAN 2L	91 - 256	
Clamping range S2/Slot2 min.	TITAN 2L	250 - 432	
Clamping range S3/Slot1 min.	TITAN 2L	167 - 306	
Clamping range S3/Slot2 min.	TITAN 2L	300 - 482	
Clamping range S4/Slot1 min.	TITAN 2L	15 - 159	
Clamping range S4/Slot2 min.	TITAN 2L	153 - 335	
Clamping range S5/Slot1 min.	TITAN 2L	159 - 299	
Clamping range S5/Slot2 min.	TITAN 2L	293 - 475	
Clamping range S1 min.	NC8 125 M Hydro	31 - 210	
Clamping range S2 min.	NC8 125 M Hydro	123 - 300	
Clamping range S3 min.	NC8 125 M Hydro	173 - 350	
Clamping range S4 min.	NC8 125 M Hydro	25 - 203	
Clamping range S5 min.	NC8 125 M Hydro	165 - 343	
Clamping range S1/Slot1 min.	NC8 125 L Hydro	23 - 166	
Clamping range S1/Slot2 min.	NC8 125 L Hydro	160 - 342	
Clamping range S2/Slot1 min.	NC8 125 L Hydro	91 - 256	
Clamping range S2/Slot2 min.	NC8 125 L Hydro	250 - 432	
Clamping range S3/Slot1 min.	NC8 125 L Hydro	167 - 306	
Clamping range S3/Slot2 min.	NC8 125 L Hydro	300 - 482	
Clamping range S4/Slot1 min.	NC8 125 L Hydro	15 - 159	
Clamping range S4/Slot2 min.	NC8 125 L Hydro	153 - 335	
Clamping range S5/Slot1 min.	NC8 125 L Hydro	159 - 299	
Clamping range S5/Slot2 min.	NC8 125 L Hydro	293 - 475	
Weight	kg	2,8	2,8
a	mm	76	47
b	mm	116	96
b1	mm	64	64
b2	mm	37	37
c	mm	24	24
d	mm	20	20
h	mm	45	45
l	mm	102	92
n	mm	89	80

Suitable accessories

	125 fixed	125 movable
Click parallels	Art.No.	6921535035042
Gripp-stud 2-spike h6,7	Art.No.	6921884036000
Gripp-stud 2-spike h5,2	Art.No.	6921884036100
Gripp-stud carbide 2-spike h8,6	Art.No.	6921884036841
Gripp-stud flat carbide coated h6,7	Art.No.	6921884037000
Gripp-stud 2-spike h9,7	Art.No.	6921884036200
Gripp-stud 4-spike h5,2	Art.No.	6921884036300
Gripp-stud round h5,5	Art.No.	6921884038000

Kein Umrüsten nötig!
Ideale Zugänglichkeit auch
mit kurzen Werkzeugen!

No retooling necessary!
For optimal accessibility
also with short tools!



Rohteilspannung rund
Clamping unmachined parts round



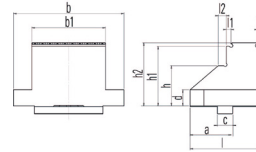
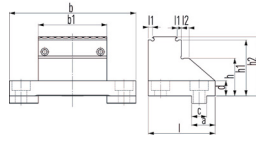
Rohteilspannung quadratisch
Clamping unmachined parts quadratic



Spannung vorgefertigter Werkstücke
Clamping pre-machined workpieces

JAW RANGE GRIPP

6921834034231



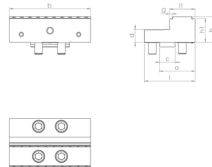
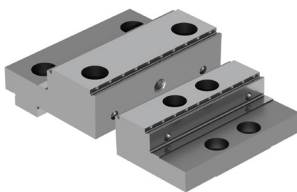
Jaw 64 mm, with integrated gripper row

- For five-sided machining, ensuring best possible accessibility to the workpiece
- For rectangular workpieces (sawn material) ≤ 0.5 mm
- Hardened 720 +50 HV10; hardening depth: 0,7 + 0,2
- Minimal lost clamping margin of 3 mm
- Positive locking through penetration of the centres into the material without preprint
- Integrated gripper row, rigid design to prevent vibrations especially when parts are clamped upright
- Additional clamping surfaces, ground on both sides
- Suitable for material strength of up to 1000 N/mm²

Size	125 fixed	125 movable
Art.No.	6921834034231	6921834036231
Clamping range S1 min.	TITAN SC	11 - 325
Clamping range S2 min.	TITAN SC	11 - 504
Clamping range S1 min.	TITAN 2K	11 - 207
Clamping range S2 min.	TITAN 2K	11 - 386
Clamping range S1 min.	TITAN 2M	11 - 325
Clamping range S2 min.	TITAN 2M	11 - 504
Clamping range S1/Slot1 min.	TITAN 2L	11 - 281
Clamping range S1/Slot2 min.	TITAN 2L	275 - 457
Clamping range S2/Slot1 min.	TITAN 2L	11 - 460
Clamping range S2/Slot2 min.	TITAN 2L	454 - 636
Weight	kg	2,6
a	mm	32,5
b	mm	115
b1	mm	64
c	mm	24
d	mm	20
h	mm	35
h1	mm	52
h2	mm	55
l	mm	88
l1	mm	4
l2	mm	7

Suitable accessories

	125 fixed	125 movable
Click parallels	Art.No.	6921535035042
Gripp-stud 2-spike h6,7	Art.No.	6921884036000
Gripp-stud 2-spike h5,2	Art.No.	6921884036100
Gripp-stud carbide 2-spike h8,6	Art.No.	6921884036841
Gripp-stud flat carbide coated h6,7	Art.No.	6921884037000
Gripp-stud 2-spike h9,7	Art.No.	6921884036200
Gripp-stud 4-spike h5,2	Art.No.	6921884036300
Gripp-stud round h5,5	Art.No.	6921884038000

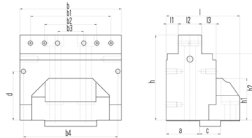
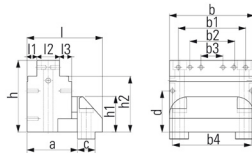
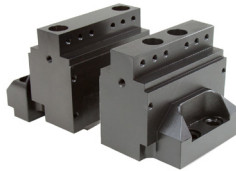


Gripp jaw with integrated gripper row

- For rectangular workpieces (sawn material) ≤ 0.5 mm
- Hardened 720 +50 HV10; hardening depth: 0,7 + 0,2
- Rigid design to prevent vibrations when parts are clamped upright
- Additional clamping surfaces, ground on both sides
- For five-sided machining, ensuring best possible accessibility to the workpiece
- Positive locking through penetration of the centres into the material
- Minimal lost clamping margin of approx. 4 mm

Size	125 fixed	125 movable
Art.No.	6921834044031	6921834045031
Clamping range S1 min.	TITAN 2K	13 - 60
Clamping range/Enlargement	TITAN 2K	127 - 240
Clamping range S1 min.	TITAN 2M	13 - 176
Clamping range/Enlargement	TITAN 2M	175 - 355
Clamping range S1/Slot1 min.	TITAN 2L	13 - 132
Clamping range S1/Slot2 min.	TITAN 2L	134 - 308
Clamping range/Enlargement	TITAN 2L	303 - 487
Clamping range S1 min.	NC8 125 M Hydro	13 - 176
Clamping range/Enlargement	NC8 125 M Hydro	175 - 355
Clamping range S1/Slot1 min.	NC8 125 L Hydro	13 - 132
Clamping range S1/Slot2 min.	NC8 125 L Hydro	134 - 308
Clamping range/Enlargement	NC8 125 L Hydro	303 - 487
Weight	kg	2,8
a	mm	83,5
b	mm	124,4
c	mm	24
d	mm	20
h	mm	39,5
h1	mm	36,5
l	mm	93,5
l1	mm	48,5
l2	mm	4

JAW RANGE GRIPP



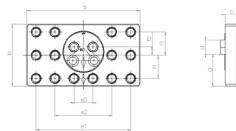
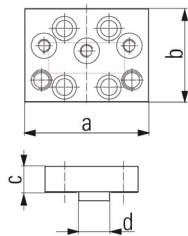
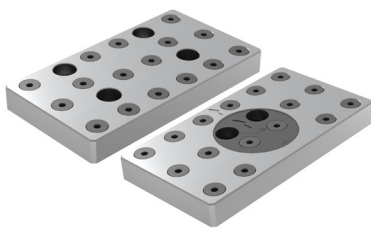
Size	125 fixed	125 movable
Art.No.	6921734047031	6921734048031
Clamping range S1 min.	TITAN 2K	16 - 181
Clamping range/Enlargement	TITAN 2K	- 260
Clamping range S1 min.	TITAN 2M	16 - 299
Clamping range/Enlargement	TITAN 2M	- 478
Clamping range S1/Slot1 min.	TITAN 2L	16 - 255
Clamping range S1/Slot2 min.	TITAN 2L	249 - 431
Clamping range/Enlargement	TITAN 2L	- 610
Clamping range/TITAN 2L 2x	TITAN 2L	- 970
Clamping range S1 min.	NC8 125 M Hydro	16 - 299
Clamping range/Enlargement	NC8 125 M Hydro	- 478
Clamping range S1/Slot1 min.	NC8 125 L Hydro	16 - 255
Clamping range S1/Slot2 min.	NC8 125 L Hydro	249 - 431
Clamping range/Enlargement	NC8 125 L Hydro	- 610
Weight	kg	6,2 5,2
a	mm	69 38
b	mm	116 116
b1	mm	90 92
b2	mm	60 60
b3	mm	30 30
b4	mm	108 108
c	mm	24 24
d	mm	56 56
h	mm	97,5 97,5
h1	mm	48 48
h2	mm	76 76
l	mm	103 84
l1	mm	13,5 13,5
l2	mm	31 27
l3	mm	16,5 16,5

Jaws for five-sided machining

- Particularly suitable for five-side machining
- Better accessibility for tools
- Ground clamping surfaces
- Additional thread for parallels
- Accuracy through pull-down
- Stability through form-locking

Suitable accessories

	125 fixed	125 movable
Storage set for five-side-machining-jaw	Art.No.	6921734027531
Gripp-strip reversible	Art.No.	6921734036031
Wedge element, four-point	Art.No.	6921834025040
Wedge element, round	Art.No.	6921834026340
Wedge element, microgripper	Art.No.	6921834025140
Wedge element, coated	Art.No.	6921834025240
Wedge adapter for jaw for five-sided machining	Art.No.	6921834027540
Pads, diamond-coated, in blister pack	Art.No.	6921834028141
Fastening bolt for five-sided machining	Art.No.	8006300068800



Size	125 fixed	125 movable
Art.No.	6921734005642	6921734072642
Clamping range S1 min.	TITAN 2K	25 - 239
Clamping range round	TITAN 2K	Ø 50 - Ø 280
Clamping range/Enlargement	TITAN 2K	- 418
Clamping range/Enlargement	TITAN 2K	- Ø 330
Clamping range S1 min.	TITAN 2M	25 - 357
Clamping range round	TITAN 2M	Ø 50 - Ø 330
Clamping range/Enlargement	TITAN 2M	- 536
Clamping range/Enlargement	TITAN 2M	- Ø 330
Clamping range S1/Slot1 min.	TITAN 2L	25 - 489
Clamping range round	TITAN 2L	Ø 50 - Ø 330
Clamping range/Enlargement	TITAN 2L	- 668
Clamping range/Enlargement	TITAN 2L	- Ø 330
Clamping range S1 min.	NC8 125 M Hydro	25 - 357
Clamping range round	NC8 125 M Hydro	Ø 50 - Ø 330
Clamping range/Enlargement	NC8 125 M Hydro	- 536
Clamping range/Enlargement	NC8 125 M Hydro	- Ø 330
Clamping range S1/Slot1 min.	NC8 125 L Hydro	25 - 489
Clamping range round	NC8 125 L Hydro	Ø 50 - Ø 330
Clamping range/Enlargement	NC8 125 L Hydro	- 668
Clamping range/Enlargement	NC8 125 L Hydro	- Ø 330
Weight	kg	3,1 3,1
a	mm	189 189
b	mm	104 103,5
c	mm	20 20
d	mm	24 24
e1	mm	157,5 157,5
e2	mm	94,5 94,5
e3	mm	31,5 31,5
f1	mm	39 38,8
f2	mm	12 13,8
g	mm	26 53,5

Support jaw, with raster for gripp-studs

- Material: hardened steel
- Case-hardened and tempered 600 + 50 HV10; Eht = 0,2
- For mounting various gripp-studs (pointed / smooth)
- Front surface can be used as clamping surface (hardened and ground)
- For clamping uneven workpieces
- To equalize non-parallel clamping surfaces

Suitable accessories

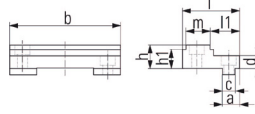
	125 fixed	125 movable
Gripp-stud 2-spike h6,7	Art.No.	6921884036000
Gripp-stud 2-spike h5,2	Art.No.	6921884036100
Gripp-stud carbide 2-spike h8,6	Art.No.	6921884036841
Gripp-stud flat carbide coated h6,7	Art.No.	6921884037000
Gripp-stud 2-spike h9,7	Art.No.	6921884036200
Gripp-stud 4-spike h5,2	Art.No.	6921884036300
Gripp-stud round h5,5	Art.No.	6921884038000

JAW RANGE GRIPP



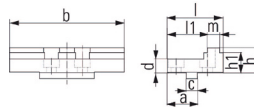
Version T-REX

6921884006041



Version CENTRO-Gripp

6921884002041



Size	125 fixed	125 movable
Art.No.	6921884006041	6921884002041
Clamping range S1 min.	T-Rex	8 - 66
Clamping range S2 min.	T-Rex	68 - 182
Clamping range S1 min.	CentroGripp	9 - 94
Clamping range S2 min.	CentroGripp	99 - 162
Clamping range S3 min.	CentroGripp	95 - 188
Clamping range S4 min.	CentroGripp	163 - 256
Weight	kg	1,3
a	mm	19
b	mm	124,4
c	mm	14
d	mm	14
h	mm	26
h1	mm	21
l	mm	64
l1	mm	33
m	mm	27

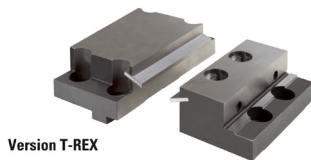
Suitable accessories

	125 fixed	125 movable
Click parallels h29	Art.No.	6921175029042
Click parallels h16	Art.No.	6921175016042
Click parallels h13	Art.No.	6921475013031

ATTENTION: For the **CENTRO Gripp** version, the movable jaw is required twice.

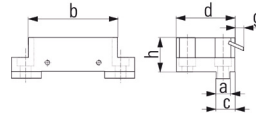
- Material: hardened steel
- Hardened 680 +80 HV30; hardening depth: 0,5 + 0,3
- For clamping parallel pre-machined workpieces
- Clamping surfaces (step) additionally carbidecoated to ensure secure clamping – holding force increased by at least a factor of 2 compared to smooth clamping surfaces

Step jaw, carbide - coated



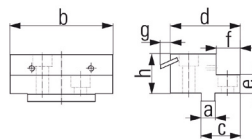
Version T-REX

6921884106031



Version CENTRO-Gripp

6921884102031



Size	125 fixed	125 movable
Art.No.	6921884106031	6921884102031
Clamping range S1 min.	T-Rex	0 - 82
Clamping range S2 min.	T-Rex	18 - 100
Clamping range S3 min.	T-Rex	45 - 127
Clamping range S4 min.	T-Rex	0 - 61
Clamping range S5 min.	T-Rex	23 - 88
Clamping range S1 min.	CentroGripp	47 - 139
Clamping range S2 min.	CentroGripp	115 - 207
Clamping range S3 min.	CentroGripp	0 - 88
Clamping range S4 min.	CentroGripp	0 - 70
Clamping range S5 min.	CentroGripp	64 - 156
Clamping range S6 min.	CentroGripp	46 - 138
Weight	kg	1,7
a	mm	14
b	mm	90
c	mm	19
d	mm	59
e	mm	16
f	mm	21
g	mm	8,8
h	mm	34

Suitable accessories

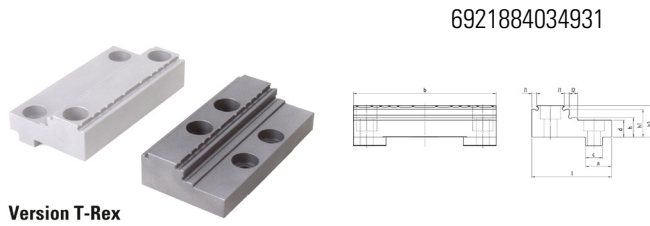
	125 fixed	125 movable
Spring leaves	Art.No.	6921884103031

ATTENTION: For the **CENTRO Gripp** version, the movable jaw is required twice.

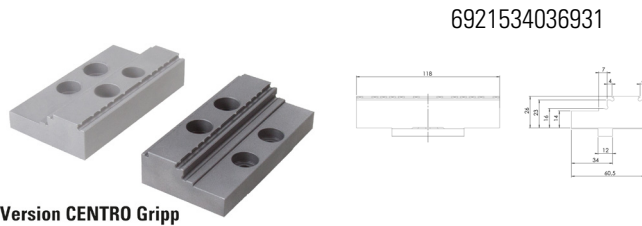
Universal pull-down jaw

- Material: hardened steel
- Hardened 680 +80 HV30; hardening depth: 0,5 + 0,3
- Reduced-width jaws, 90 mm
- Ground and polished clamping surfaces
- Pull-down with ground and polished spring leaves for unmachined and pre-machined clamping surfaces
- Jaw can be used with or without spring leaves
- Spring leaves plugged with 1-Click
- High clamping accuracy for parallel and accurate angle machining
- Threaded holes for screw-on parallels
- Click system on the high side

JAW RANGE GRIPP



Version T-Rex



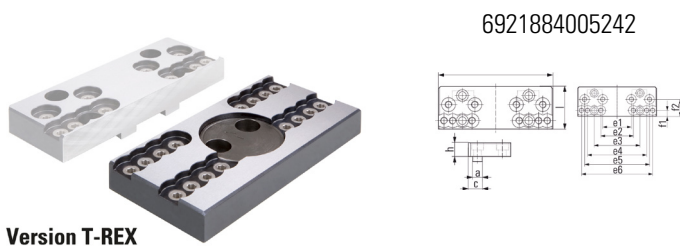
Version CENTRO Gripp

Size	125 fixed	125 movable
Art.No.	6921884034931	6921534036931
Clamping range S1 min.	T-Rex	11 - 68
Clamping range S2 min.	T-Rex	95 - 172
Clamping range S3 min.	T-Rex	44 - 102
Clamping range S1 min.	CentroGripp	148 - 226
Clamping range S2 min.	CentroGripp	80 - 158
Clamping range S3 min.	CentroGripp	15 - 90
Clamping range S4 min.	CentroGripp	80 - 158
Weight	kg	1,3
a	mm	21,5
b	mm	118
c	mm	14
d	mm	14
h	mm	16
h1	mm	23
h2	mm	26
l	mm	66
l1	mm	4
l2	mm	7

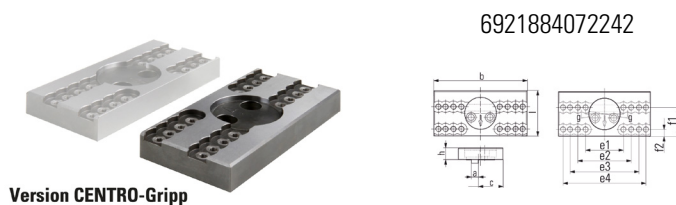
Gripper jaw with integrated gripper row

- For rectangular workpieces (sawn material) $l \leq 0.5$ mm
- Hardened 720 +50 HV10; hardening depth: 0,7 + 0,2
- Rigid design to prevent vibrations when parts are clamped upright
- Additional clamping surfaces, ground on both sides
- For five-sided machining, ensuring best possible accessibility to the workpiece
- Positive locking through penetration of the centres into the material
- Minimal lost clamping margin of approx. 4 mm
- Suitable for material strength up to 1000 N/mm²

ATTENTION: For the **CENTRO Gripp** version, the movable jaw is required twice.



Version T-REX



Version CENTRO-Gripp

Size	125 fixed	125 movable
Art.Nr.	6921884005242	6921884072242
Clamping range min.	T-Rex	0 - 152
Clamping range min.	T-Rex	88 - 165
Clamping range round	T-Rex	Ø 100 - Ø 160
Clamping range min.	CentroGripp	0 - 195
Clamping range min.	CentroGripp	88 - 165
Clamping range round	CentroGripp	Ø 100 - Ø 230
Weight	kg	1,5
a	mm	14
b	mm	165
c	mm	20
h	mm	20
l	mm	61
e1	mm	60
e2	mm	68
e3	mm	96
e4	mm	124
f1	mm	12
f2	mm	35

Support jaws for universal gripper set

- Material: hardened steel
- Case-hardened and tempered 600 + 50 HV10; hardening depth = 0,2
- Front surface can be used as clamping surface (hardened, ground and polished)
- To mount the Universal Grip Set

Suitable accessories

	125 fixed	125 movable
Universal gripper set	Art.No.	6921884027031

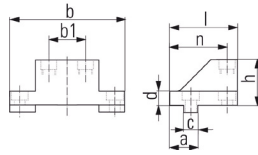
ATTENTION: For the **CENTRO Gripp** version, the movable jaw is required twice.

JAW RANGE GRIPP



Version T-REX

6921884040140

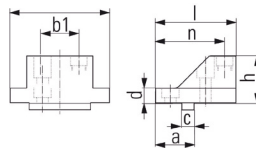


Size	125 fixed	125 movable
Art.No.	6921884040140	6921884040040
Clamping range S1 min.	T-Rex	19 - 67
Clamping range S2 min.	T-Rex	61 - 137
Clamping range S3 min.	T-Rex	128 - 208
Clamping range S4 min.	T-Rex	15 - 59
Clamping range S5 min.	T-Rex	120 - 200
Clamping range S1 min.	CentroGripp	196 - 284
Clamping range S2 min.	CentroGripp	128 - 216
Clamping range S3 min.	CentroGripp	21 - 74
Clamping range S4 min.	CentroGripp	0 - 59
Clamping range S5 min.	CentroGripp	54 - 142
Clamping range S6 min.	CentroGripp	35 - 127
Weight	kg	1,6
a	mm	28
b	mm	116
b1	mm	37
c	mm	14
d	mm	14
h	mm	45
l	mm	67
n	mm	56



Version CENTRO-Gripp

6921884040040



Suitable accessories

	125 fixed	125 movable
Click parallels	Art.No.	6921535035042
Gripp-stud 2-spike h6,7	Art.No.	6921884036000
Gripp-stud 2-spike h5,2	Art.No.	6921884036100
Gripp-stud carbide 2-spike h8,6	Art.No.	6921884036841
Gripp-stud flat carbide coated h6,7	Art.No.	6921884037000
Gripp-stud 2-spike h9,7	Art.No.	6921884036200
Gripp-stud 4-spike h5,2	Art.No.	6921884036300
Gripp-stud round h5,5	Art.No.	6921884038000

Reduced-width jaw, 64 mm

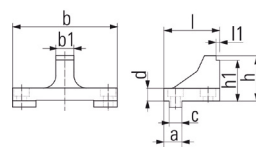
- Allows unhindered access to the workpiece, even with short tools
- For clamping small to medium sized workpieces
- The clamping of unmachined parts (incl. round material) is supported via 2 adjustable gripp-studs in each case (gripp-studs not supplied with the jaws)
- Jaws with Click system for parallels
- Ground face can be used as clamping surface

ATTENTION: For the **CENTRO Gripp** version, the movable jaw is required twice.

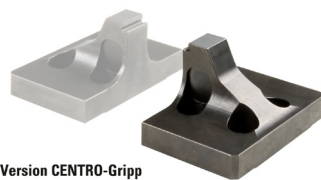


Version T-REX

6921884041141

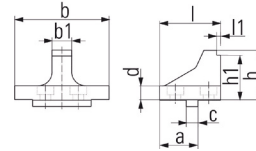


Size	125 fixed	125 movable
Art.No.	6921884041141	6921884041041
Clamping range S1 min.	T-Rex	9 - 74
Clamping range S1 min.	CentroGripp	12 - 104
Clamping range S2 min.	CentroGripp	80 - 172
Weight	kg	1
a	mm	20
b	mm	116
b1	mm	20
c	mm	14
d	mm	14
h	mm	50
h1	mm	45
l	mm	62
l1	mm	4



Version CENTRO-Gripp

6921884041041



ATTENTION: For the **CENTRO Gripp** version, the movable jaw is required twice.

Reduced-width jaw, 20 mm

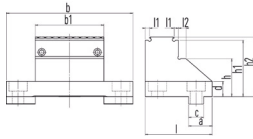
- Material: Hardened steel
- Hardened 680 +80 HV30; hardening depth: 0,5 + 0,3
- For clamping parallel pre-machined small workpieces
- Further enhanced accessibility to the workpiece thanks to slim, tall shape – also optimal for short tools
- Front surface (step) additionally carbide-coated to ensure secure clamping – holding force increased by at least a factor of 2 compared to smooth clamping surfaces

JAW RANGE GRIPP



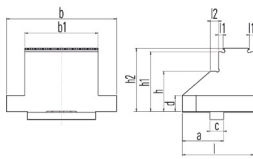
Version T-REX

6921884034031



Version CENTRO Gripp

6921534036031



Size	125 fixed	125 movable
Art.No.	6921884034031	6921534036031
Clamping range S1 min.	T-Rex	11 - 72
Clamping range S2 min.	T-Rex	93 - 170
Clamping range S3 min.	T-Rex	51 - 106
Clamping range S1 min.	CentroGripp	150 - 226
Clamping range S2 min.	CentroGripp	80 - 158
Clamping range S3 min.	CentroGripp	15 - 92
Clamping range S4 min.	CentroGripp	80 - 160
Weight	kg	1, 1,5
a	mm	22, 35
b	mm	118, 96
b1	mm	64, 64
c	mm	14, 12
d	mm	14, 14
h	mm	35, 35
h1	mm	52, 52
h2	mm	55, 55
l	mm	62,5, 62,5
l1	mm	4, 3
l2	mm	7, 7

Jaw 64 mm, with integrated gripper row

- For rectangular workpieces (sawn material) $\leq 0,5$ mm
- Hardened 720 +50 HV10; hardening depth: 0,7 + 0,2
- Rigid design to prevent vibrations when parts are clamped upright
- Additional clamping surfaces, ground on both sides
- For five-sided machining, ensuring best possible accessibility to the workpiece

Suitable accessories

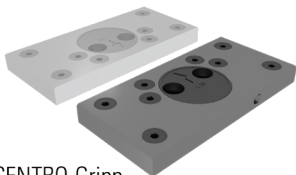
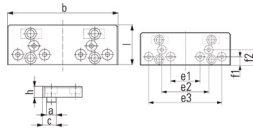
	125 fixed	125 movable
Click parallels	Art.No.	6921535035042

ATTENTION: For the **CENTRO Gripp** version, the movable jaw is required twice.



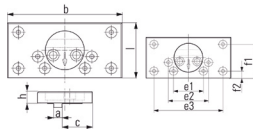
Version T-Rex

6921884005242



CENTRO-Gripp

6921884072242



Size	125 fixed	125 movable
Art.No.	6921884005042	6921884072042
Clamping range min.	T-Rex	26 - 185
Clamping range min.	T-Rex	73 - 150
Clamping range round	T-Rex	$\emptyset 80 - \emptyset 190$
Clamping range min.	CentroGripp	25 - 274
Clamping range min.	CentroGripp	73 - 150
Clamping range round	CentroGripp	$\emptyset 80 - \emptyset 250$
Weight	kg	1,3, 1,6
a	mm	14, 12
b	mm	165, 165
c	mm	20, 43,5
h	mm	16, 16
l	mm	59, 79
e1	mm	54, 58
e2	mm	86, 78
e3	mm	134, 134
f1	mm	15, 66,5
f2	mm	28, 13,5

Suitable accessories

	125 fixed	125 mobil
Gripp-stud 2-spike h6,7	Art.No.	6921884036000
Gripp-stud 2-spike h5,2	Art.No.	6921884036100
Gripp-stud carbide 2-spike h8,6	Art.No.	6921884036841
Gripp-stud flat carbide coated h6,7	Art.No.	6921884037000
Gripp-stud 2-spike h9,7	Art.No.	6921884036200
Gripp-stud 4-spike h5,2	Art.No.	6921884036300
Gripp-stud round h5,5	Art.No.	6921884038000

Support jaws for gripper studs

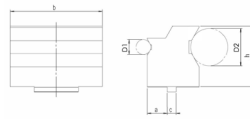
- Material: hardened steel
- Case-hardened and tempered 600 + 50 HV10; hardening depth = 0,2
- For mounting various studs (pointed/smooth)
- Front surface can be used as clamping surface (hardened, ground and polished)

Pivot jaw:

- For clamping uneven workpieces
- To compensate for non-parallel clamping surfaces
- Studs (pointed/smooth) not included

ATTENTION: For the **CENTRO Gripp** version, the movable jaw is required twice.

JAW RANGE QUICK CHANGE

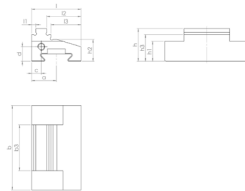
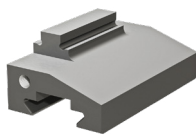


Size	125	
Art.No.	6921534001031	
Weight	kg	4,7
D1	mm	Ø 17 - Ø 42
D2	mm	Ø 38 - Ø 104
a	mm	27
b	mm	124,4
c	mm	12
h	mm	81

Prismatic jaw, horizontal movable

- Prism angle 120° - shaft height 53 mm on both sides
- Hardened and ground
- Jaws open far enough to allow the workpiece to be removed from above – even at maximum diameter
- Ideally suited for machining keyways on stepped shafts, for example, using two vices side-by-side

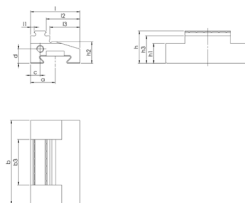
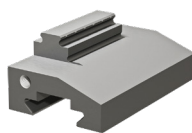
ATTENTION: The movable jaw is required twice.



Size	70	
Art.No.	6921544020031	
Clamping range S1 min.	TeleCentric 70 K	9 - 78
Clamping range S1 max.	TeleCentric 70 K	16 - 85
Clamping range S2 min.	TeleCentric 70 K	59 - 128
Clamping range S2 max.	TeleCentric 70 K	66 - 135
Clamping range S1 min.	TeleCentric 70 M	42 - 143
Clamping range S1 max.	TeleCentric 70 M	49 - 150
Clamping range S2 min.	TeleCentric 70 M	92 - 193
Clamping range S2 max.	TeleCentric 70 M	99 - 200
Weight	kg	0,3
a	mm	20,5
b	mm	70
b3	mm	38
c	mm	8
d	mm	12
h	mm	27
h2	mm	18
h3	mm	22
l	mm	41
l1	mm	3,5
l2	mm	28,5
l3	mm	25

Step jaw 38 mm, carbide coated mobile

- Hardened 720 +50 HV10; hardening depth: 0,7 +0,2
- For clamping parallel pre-machined workpieces
- Clamping surfaces (step) additionally carbide coated to ensure secure clamping – holding force increased by at least a factor of 2 compared to smooth clamping surfaces
- Minimal lost clamping margin of 4 mm

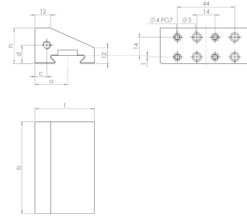
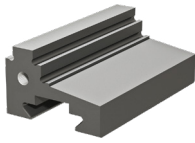


Size	70	
Art.No.	6921544020131	
Clamping range S1 min.	TeleCentric 70 K	9 - 78
Clamping range S1 max.	TeleCentric 70 K	15 - 84
Clamping range S2 min.	TeleCentric 70 K	59 - 128
Clamping range S2 max.	TeleCentric 70 K	65 - 134
Clamping range S1 min.	TeleCentric 70 M	42 - 143
Clamping range S1 max.	TeleCentric 70 M	48 - 149
Clamping range S2 min.	TeleCentric 70 M	92 - 193
Clamping range S2 max.	TeleCentric 70 M	98 - 199
Weight	kg	0,3
a	mm	20,5
b	mm	70
b3	mm	38
c	mm	8
d	mm	12
h	mm	27
h1	mm	16,5
h2	mm	18
h3	mm	23
l	mm	41
l1	mm	3
l2	mm	28
l3	mm	25

Gripper jaw 38 mm mobile

- For five-sided machining, ensuring best possible accessibility to the workpiece
- For rectangular workpieces (sawn material) // ≤ 0.5 mm
- Positive locking through penetration of the centres into the material without preprint
- Integrated gripper row, rigid design to prevent vibrations especially when parts are clamped upright
- Additional clamping surfaces, ground on both sides
- Suitable for material strength up to 1000 N/mm²

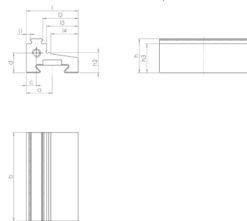
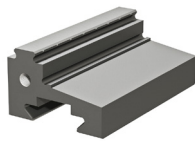
JAW RANGE QUICK CHANGE



Step jaw 70 mm, carbide coated mobile

- Hardened 720 + 50 HV10; Eht 0,7 + 0,2
- For clamping parallel pre-machined workpieces
- Clamping surfaces (step) additionally carbide coated to ensure secure clamping – holding force increased by at least a factor of 2 compared to smooth clamping surface
- Minimal lost clamping margin of 4 mm

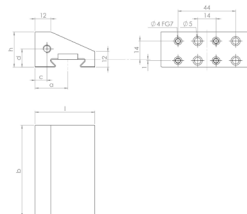
Size	70	
Art.No.		6921544010031
Clamping range S1 min.	TeleCentric 70 K	9 - 78
Clamping range S1 max.	TeleCentric 70 K	16 - 85
Clamping range S2 min.	TeleCentric 70 K	59 - 128
Clamping range S2 max.	TeleCentric 70 K	66 - 135
Clamping range S1 min.	TeleCentric 70 M	42 - 143
Clamping range S1 max.	TeleCentric 70 M	49 - 150
Clamping range S2 min.	TeleCentric 70 M	92 - 193
Clamping range S2 max.	TeleCentric 70 M	99 - 200
Weight	kg	0,3
a	mm	20,5
b	mm	70
c	mm	8
d	mm	15,7
h	mm	27
h1	mm	16
h2	mm	22
l	mm	41
l1	mm	3,5
l2	mm	28,5
l3	mm	25
l4	mm	21,5



Gripp jaw 70 mm mobile

- For five-sided machining, ensuring best possible accessibility to the workpiece
- For rectangular workpieces (sawn material) // ≤ 0.5 mm
- Hardened 720 + 50 HV10; hardening depth: 0,7 + 0,2
- Positive locking through penetration of the centres into the material without preprint
- Integrated gripper row, rigid design to prevent vibrations especially
- Additional clamping surfaces, ground on both sides
- Suitable for material strength up to 1000 N/mm²

Size	70	
Art.No.		6921544010131
Clamping range S1 min.	TeleCentric 70 K	9 - 78
Clamping range S1 max.	TeleCentric 70 K	15 - 84
Clamping range S2 min.	TeleCentric 70 K	59 - 128
Clamping range S2 max.	TeleCentric 70 K	65 - 134
Clamping range S1 min.	TeleCentric 70 M	42 - 143
Clamping range S1 max.	TeleCentric 70 M	48 - 149
Clamping range S2 min.	TeleCentric 70 M	92 - 193
Clamping range S2 max.	TeleCentric 70 M	98 - 199
Weight	kg	0,3
a	mm	20,5
b	mm	70
c	mm	8
d	mm	15,7
h	mm	27
h2	mm	16
h3	mm	23
l	mm	41
l1	mm	3
l2	mm	28
l3	mm	25
l4	mm	21,5



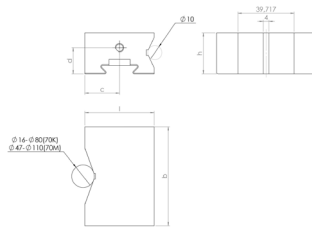
Zero jaw b70

- For TeleCentric 70 K
With this jaw you can clamp parallel pre-machined workpieces with a length of min. 0 - max. 69 mm.
- For TeleCentric 70 M the Clamping range adapter is required to clamp to 0.
Clamping range from min. 0 mm to max. 207 mm can thus be achieved

Size	70	
Art.No.		6921544060031
Clamping range S1 min.	TeleCentric 70 K	0 - 207
Weight	kg	0,46
a	mm	25
b	mm	70
c	mm	9
d	mm	14
h	mm	27

- The dowel pins serve as bearing surface and can be set at a height of 176 mm and 191 mm
- Minimum clamping edge loss: 20 mm at height 176 mm
5 mm at height 191 mm

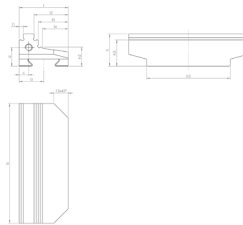
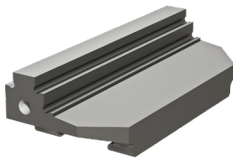
JAW RANGE QUICK CHANGE



Size	70	
Art.No.	6921544090031	
Weight	kg	0,6
D1	TeleCentric 70 K	Ø 16 - Ø 80
D2	TeleCentric 70 M	Ø 47 - Ø 110
b	mm	70
c	mm	24,5
d	mm	18,5
h	mm	29

Prismatic jaw 70 mm mobile

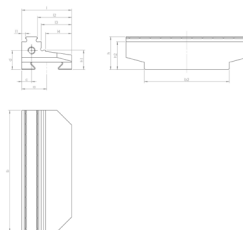
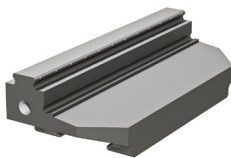
- For horizontal and vertical clamping of round and flat workpieces



Size	70	
Art.No.	6921544030031	
Clamping range S1 min.	TeleCentric 70 K	9 - 78
Clamping range S1 max.	TeleCentric 70 K	16 - 85
Clamping range S2 min.	TeleCentric 70 K	59 - 128
Clamping range S2 max.	TeleCentric 70 K	66 - 135
Clamping range S1 min.	TeleCentric 70 M	42 - 143
Clamping range S1 max.	TeleCentric 70 M	49 - 149
Clamping range S2 min.	TeleCentric 70 M	92 - 193
Clamping range S2 max.	TeleCentric 70 M	99 - 200
Weight	kg	0,4
a	mm	20,5
b	mm	100
b2	mm	70
c	mm	8
d	mm	15,7
h	mm	27
h2	mm	16
h3	mm	22
l	mm	41
l1	mm	3,5
l2	mm	28,5
l3	mm	25
l4	mm	21,5

Step jaw 100 mm, carbide coated mobile

- Material: hardened steel
- For clamping parallel pre-machined workpieces
- Clamping surfaces (step) additionally carbide coated to ensure secure clamping – holding force increased by at least a factor of 2 compared to smooth clamping surface
- Minimal lost clamping margin of 4 mm

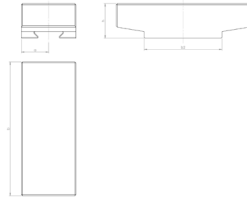
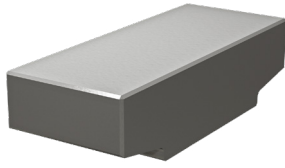


Size	70	
Art.No.	6921544030131	
Clamping range S1 min.	TeleCentric 70 K	9 - 78
Clamping range S1 max.	TeleCentric 70 K	15 - 84
Clamping range S2 min.	TeleCentric 70 K	59 - 128
Clamping range S2 max.	TeleCentric 70 K	65 - 134
Clamping range S1 min.	TeleCentric 70 M	42 - 143
Clamping range S1 max.	TeleCentric 70 M	48 - 149
Clamping range S2 min.	TeleCentric 70 M	92 - 193
Clamping range S2 max.	TeleCentric 70 M	98 - 199
Weight	kg	0,4
a	mm	20,5
b	mm	100
b2	mm	70
c	mm	8
d	mm	11,3
h	mm	27
h1	mm	16
h2	mm	23
l	mm	41
l1	mm	3
l2	mm	28
l3	mm	25
l4	mm	21,5

Gripp jaw 100 mm mobile

- For five-sided machining, ensuring best possible accessibility to the workpiece
- For rectangular workpieces (sawn material) ≤ 0.5 mm
- Positive locking through penetration of the centres into the material without preprint
- Integrated gripper row, rigid design to prevent vibrations especially when parts are clamped upright
- Additional clamping surface, ground on both sides
- Suitable for material strength up to 1000 N/mm²

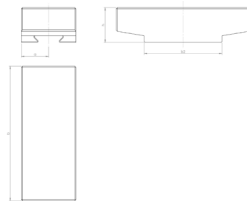
JAW RANGE QUICK CHANGE



Size	70	
Art.No.	6921544080031	
Clamping range S1 min.	TeleCentric 70 K	0 - 70
Clamping range S1 min.	TeleCentric 70 M	34 - 135
Weight	kg	1,2
a	mm	24,5
b	mm	120
b2	mm	70
h	mm	31

Soft jaw 120 mm mobile Steel

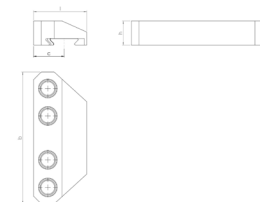
- Material: steel 21MnCr5G
- Jaws can be case-hardened
- For production of special jaws by the customer



Size	70	
Art.No.	6921544081031	
Clamping range S1 min.	TeleCentric 70 K	0 - 70
Clamping range S1 min.	TeleCentric 70 M	34 - 135
Weight	kg	1,2
a	mm	24,5
b	mm	120
b2	mm	70
h	mm	31

Soft jaw 120 mm mobile Aluminum

- Material: Aluminum AlZn5.5MgCu
- For production of special jaws by the customer

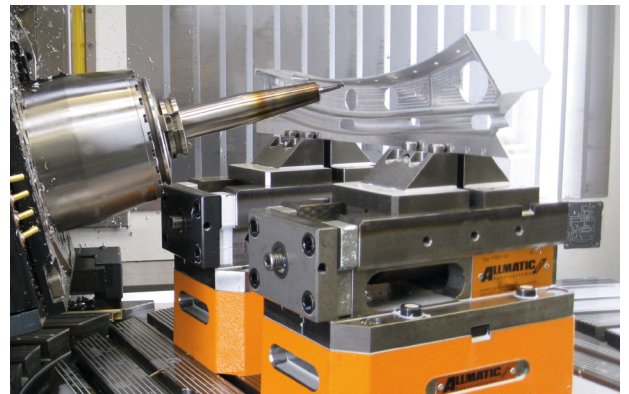
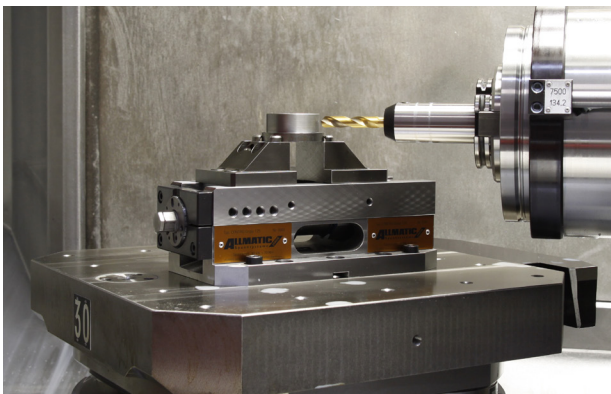
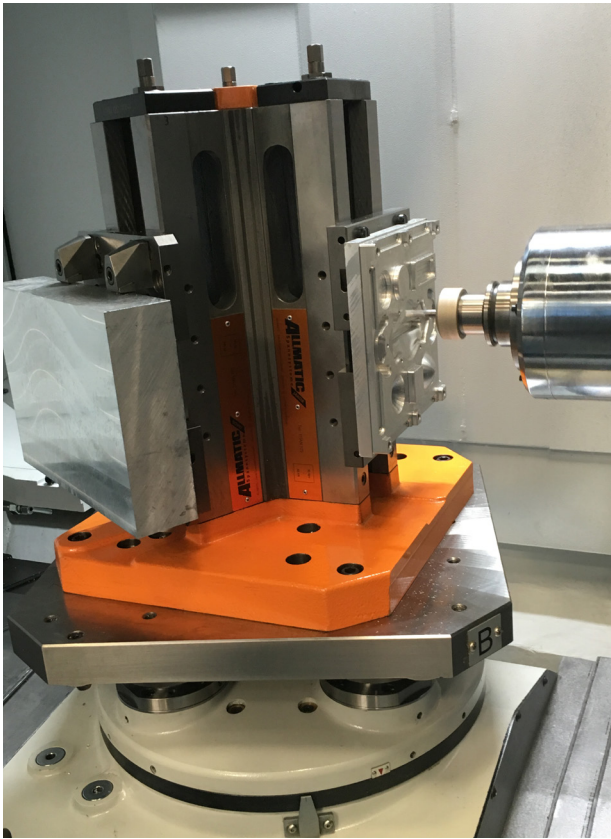


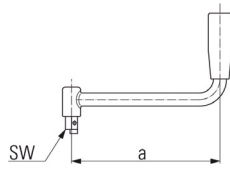
Size	70	
Art.No.	6921544070042	
Clamping range S1 min.	TeleCentric 70 K	24 - 82
Clamping range S1 round min.	TeleCentric 70 K	Ø 50 - Ø 90
Clamping range S2 max.	TeleCentric 70 K	77 - 142
Clamping range S2 round max.	TeleCentric 70 K	Ø 84 - Ø 165
Clamping range S1 min.	TeleCentric 70 M	50 - 147
Clamping range S1 round min.	TeleCentric 70 M	Ø 64 - Ø 170
Clamping range S2 max.	TeleCentric 70 M	15 - 84
Clamping range S2 round max.	TeleCentric 70 M	Ø 117 - Ø 225
Weight	kg	0,6
b	mm	120
c	mm	28
h	mm	22
l	mm	48,5

Support jaw b120

- For clamping raw parts, irregular and round workpieces
- For the mounting of various gripper studs (pointed/smooth)
- Material: hardened steel
- Case-hardened and tempered 720 + 50 HV10; hardening depth = 0,7 + 0,2

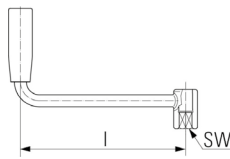
APPLICATIONS





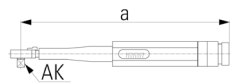
Hand crank

HD / Size	100	125	160	200
Art.No.	6923015000131	6923025000131	6923045000142	
Weight	kg 0,3	0,4	0,5	
Wrench size	mm 12	14	17	
a	mm 147	178	220	



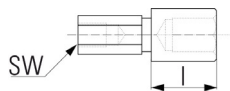
Hand crank

NC8 / DUO 90 / Size	90	125	160	200	200 HD
Art.No.	6921685508031				
Weight	kg 0,4				
Wrench size	mm 14				
a	mm 180				



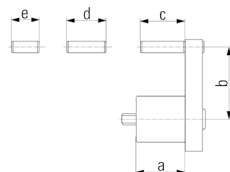
Torque wrench

Typ	T-Rex	TITAN	DUO Plus 125	TeleCentric 70 K/M	CentroGripp
Art.No.	0651114113188				0651114113153
Weight	kg 0,4				1,2
Torque	Nm 10 - 60				20 - 120
AK	inch 3/8"				1/2"
a	mm 307				410



Hexagonal extension

Size	NC8 90 - 200 mm	TC/LC 125 - 200 MM	NC8 90 - 200 mm	TC/LC 125 - 200 MM
Art.No.	6921685512040		6921685512140	
Weight	kg 0,1		0,2	
Wrench size	mm 14		14	
l	mm 30		60	



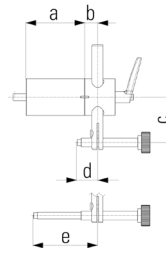
Workpiece stop

Size	90	100	125	125 M/L	160	200	200 HD
Art.No.	6921685670042						
Weight	kg 0,4						
a	mm 34						
b	mm 27 - 59						
c	mm 31						
d	mm 27						
e	mm 19						

ACCESSORIES

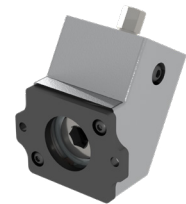
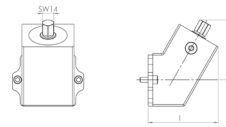
Workpiece stop

Size	90	100	125	125 M/L	160	200	200 HD
Art.No.	6921285650144						
Weight	kg	1,4					
a	mm	67					
b	mm	15					
c	mm	33 - 92					
d	mm	12 - 63,5					
e	mm	53,5 - 113,5					



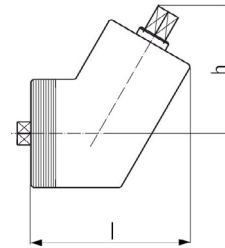
Angular drive

NC8 / Size	90	125	160	200
Art.No.	6921905700043	6921685700543		
Weight	kg	1,5	1,7	
Wrench size	mm	14	14	
h	mm	74	74	
l	mm	87	96	



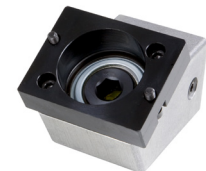
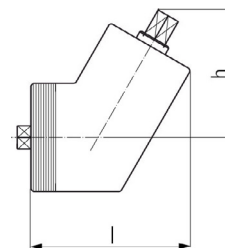
Angular drive

TC/LC / Size	90	125	160	200
Art.No.	6921675700043	6921285700143		
Weight	kg	1,6	1,9	
Wrench size	mm	12	14	
h	mm	75	75	
l	mm	87	97	



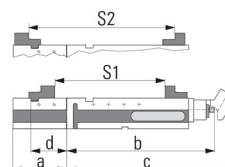
Angular drive

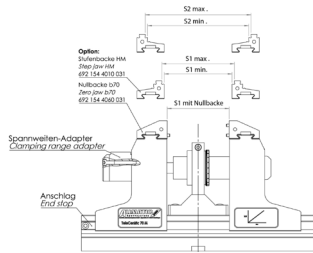
DUO / Size	90	125
Art.No.	6921485700043	
Weight	kg	1,9
Wrench size	mm	14
h	mm	75
l	mm	102



Clamping range enlargement

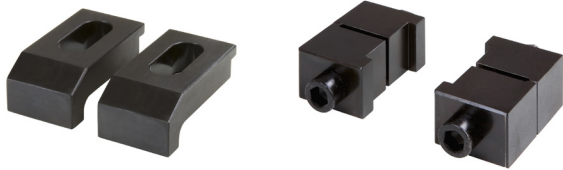
NC/TC/NC8/TITAN/Size	125	160
Art.No.	6921685008055	6921705008055
Weight	kg	19,6
Clamping range S1	mm	259 - 505
Clamping range S2	mm	439 - 675
a	mm	237
b	mm	620
c	mm	683
d	mm	172





Clamping range adapter

TeleCentric / Size	70 M	
Art.No.	6921545008055	
Weight	kg	0,4
Clamping range S1 min. with zero jaw	mm	0 - 93
Clamping range S1 min. with step jaw	mm	9 - 102
Clamping range S1 max. with step jaw	mm	16 - 109
Clamping range S2 min.	mm	59 - 152
Clamping range S2 max.	mm	66 - 159



Side clamps

HD / Size	90	100	125	160	200
Art.No.	6921015000231		0692102500031		
Weight	kg 0,6		0,6		

DUO Side clamps

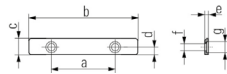
NC8 / Size	90	100	125	160	200
Art.No.	6921675000031		6921285000031		
Weight	kg 0,9		1,2		



Aligning and fixing set

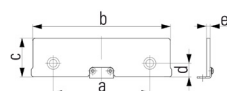
Mounting pallet and machine table	T-Nut 12 / M10	T-Nut 14 / M12	T-Nut 16 / M14	T-Nut 18 / M16	T-Nut 22 / M16
Art.No.	6921285600031	6921285601031	6921285602031	6921285603031	6921285607031
Weight	kg 0,5	0,7	0,9	1	2

Mounting lower part TeleCentric	T-Nut 14 / M12	T-Nut 16 / M12	T-Nut 18 / M 12
Art.No.	6921545611031	6921545612031	6921545613031
Weight	kg 0,3	0,3	0,3



Parallels (pair)

Size	h13	h15	h19
Art.No.	6921475013031	6921485015031	6921305019031
Weight	kg 0,1	0,2	0,2
a	mm 52	88	88
b	mm 89	124	160
c	mm 13	15	19
d	mm 6	6	6
e	mm 3	3	3
f	mm Ø 6	Ø 6	Ø 6
g	mm Ø 9	Ø 9	Ø 9

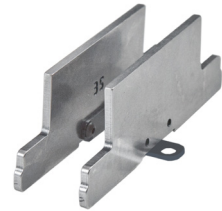
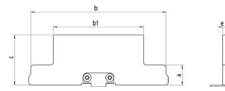


Click parallels (pair)

Size	90		160	
Art.No.	6921175016042	6921175029042	6921205025042	6921205044042
Weight	kg 0,1	0,2	0,3	0,4
a	mm 48	48	88	88
b	mm 90	90	160	160
c-0,01	mm 16	29	25	44
d	mm 8,75	8,75	12,25	12,25
e	mm 3	3	3	3
Size	125			
Art.No.	6921185020042	6921185035042	6921185025042	6921185030042
Weight	kg 0,2	0,3	0,25	0,25
a	mm 88	88	88	88
b	mm 125	125	125	125
c-0,01	mm 20	35	25	30
d	mm 12,25	12,25	12,25	12,25
e	mm 3	3	3	3

Click parallels (pair)

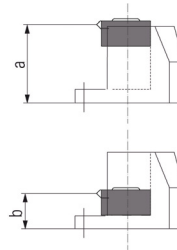
Size	125	
Art.No.	6921535035042	
Weight	kg	0,2
a	mm	14
b	mm	96
b1	mm	64
c	mm	35
e	mm	3



Universal gripper set

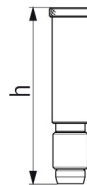
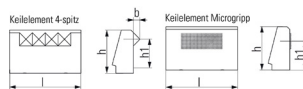
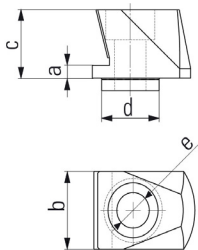
- For clamping complex unmachined parts
- By reworking the individual elements, both grip height and support height can be changed

Size	125	160
Art.No.	6921884027031	
Weight	kg	4,5
a	mm	40
b	mm	18



Pull-down set case

- Pull-down elements suitable for clamping and pulling down clamping surfaces that are unmachined or pre-machined onto the guideway or onto the supplied clamping bolts
- In this way workpieces can be clamped almost exactly parallel to the guideway for machining
- The direct contact to the clamping bolts largely avoids vibrations in the workpiece
- Attention: wedge adapter, wedge elements and support pins are available separately and in different heights

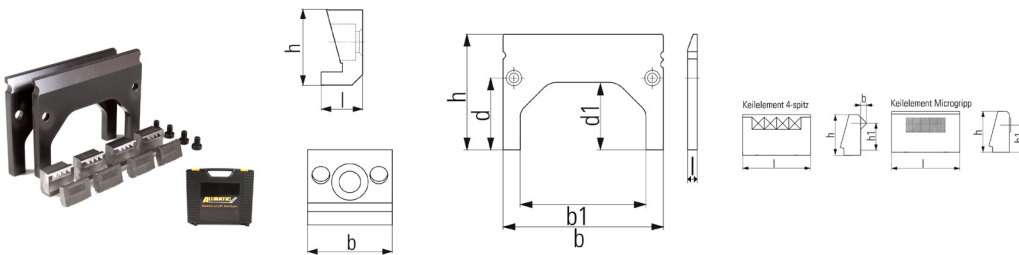


Size	125	125	160
Art.No.	6921734027031	6921734027131	69217344027231
Description	Pull down set, low	Pull down set, high	Pull down set TITAN 2-160
Weight	kg	1,5	2
Wedge adapter			
a	mm	4	18
b	mm	24	24
c	mm	21,7	35,7
d		Ø 20	Ø 20
e	mm	Ø 11	Ø 11
Wedge element			
b	mm	2,4	
h	mm	16,5	
h1	mm	13 resp. 11	
l	mm	27,8	
Support pin			
h	mm	23 resp. 34	34 resp. 48
			34 resp. 53

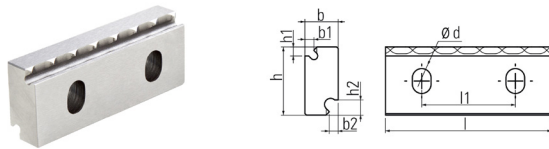
Size	125	
Art.No.	6921734027031	
Description	Kofferset für 5-Seiten Backe	
Weight	kg	1,8
Wedge adapter		
b	mm	24,15
h	mm	21,45
l	mm	11,8
Wedge element		
b	mm	2,4
h	mm	16,5
h1	mm	13
l	mm	27,8
Insertable plate		
b	mm	125
b1	mm	98
d	mm	56
d1	mm	53
h	mm	90
l	mm	7,6

Storage set for five-side-machining jaw

- Pull-down elements suitable for clamping and pulling unmachined clamping surfaces down onto the guideway or onto the supplied 90 mm support plates
- In this way workpieces can be clamped almost exactly parallel to the guideway for machining
- The direct contact to the support plates largely avoids vibrations in the workpiece
- Attention: Wedge adapter, wedge elements and insertable plate are available separately and in different heights



Gripp-strip reversible



- Gripper strip can be reversed for mounting on the 5-sided machining jaw (4 of them are required)
- For clamping unmachined parts close to the edge, 3 or 5 mm

Size	125	
Art.No.	6921734036031	
Weight	kg	0,1
b	mm	11
b1	mm	3
b2	mm	3
d	mm	6,2
h	mm	22,5
h1	mm	3
h2	mm	5
l	mm	55
l1	mm	31

Gripp-studs



	Gripp-stud 2-spike h6,7	Gripp-stud 2-spike h5,2	Gripp-stud 2-spike h9,7	Gripp-stud 4-spike fine h5,2	Gripp-stud carbide 2-spike h8,6	Gripp-stud round h5,5	Gripp-stud flat carbide coated h6,7
Article number	692 188 4036 000	692 188 4036 100	692 188 4036 200	692 188 4036 300	692 188 4036 841	692 188 4038 000	692 188 4037 000
Max. material strength	1000 N/mm ²	1000 N/mm ²	1000 N/mm ²	1000 N/mm ²	1400 N/mm ²	1000 N/mm ²	unlimited
Max. lost clamping edge (in mm)	6,7	5,2	9,7	5,2	8,6	5,5	6,7
Max. gripping height (in mm)	5,0	3,5	8,0	4,1	4,7	4,1	
Special features	Standard, Allrounder	Smallest lost clamping edge	Highest gripping height	Optimized for soft workpieces	For high-strength workpieces	6 mm clearance under workpiece (drilling through)	Clamping without indentations



Gripp-Spinner
Art.No.
6921885214000

Ideal for assembling the ALLMATIC gripp-studs

THE LEAP INTO THE FUTURE

Automation and Industry 4.0



SERVICE

THE CUSTOMER IS THE MAIN FOCUS

We provided comprehensive services before and after purchase: with well structured information on clamping system and their possible applications as well as first class advice on special solutions. So that you receive exactly the clamping system, which is best suited to your needs.

With ALLMATIC, you also benefit after purchase with:

- a warranty of 2 years
- an optional express repair, processing within 24 hrs.
- 20 years' availability of replacement parts



PRE-SALES



THE ALLMATIC SAMPLE CASE

The proof of the pudding is in the eating: Test the ALLMATIC clamping system of your choice where it is to be used – in your company. Free of charge for 2 weeks.

So that you can learn directly on site ...

- how the ALLMATIC system is integrated into your production processes
- what your machine operators say about it
- what increases in efficiency are possible
- what end results you achieve with it

AFTER SALES

MAXIMUM AFTER-SALES SUPPORT

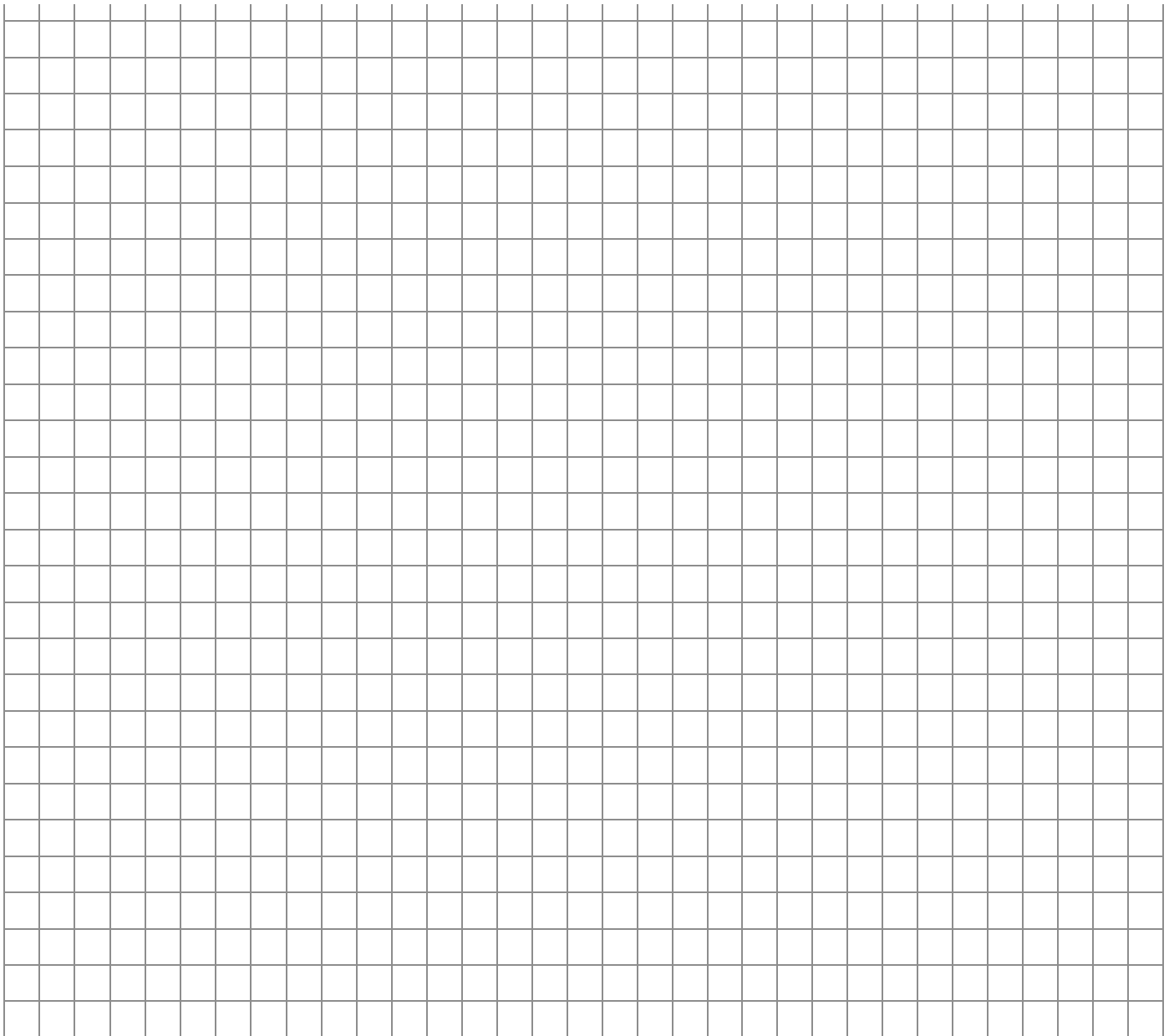
Powerful systems are only as valuable as you exploit their capacities. To ensure full performance of the ALLMATIC clamping systems, we provide you with comprehensive media support and practical services. For example with:

- Operating instructions
- CAD models in 3D
- Videos
- Info on service
- Fast repair in our company
- Service partners worldwide

www.allmatic.de/repair



Service & Repair
Phone: +49 8377 929-358
Telefax: +49 8377 929-380
service@allmatic.de



Length measurements / conversion metric to imperial

mm	inch (in)	foot (ft)
25,4 mm	1 in	0,083 ft

0,02 mm	0,0008 in	
0,04 mm	0,0016 in	
0,06 mm	0,0024 in	
0,08 mm	0,0031 in	
0,10 mm	0,0039 in	
70 mm	2,755 in	0,230 ft
90 mm	3,543 in	0,295 ft
125 mm	4,921 in	0,410 ft
160 mm	6,299 in	0,525 ft
200 mm	7,874 in	0,655 ft
300 mm	11,811 in	0,984 ft
400 mm	15,748 in	1,312 ft

kN	lbf
1 kN	224,809 lbf

28	6294,650
30	6744,268
40	8992,357
60	13488,535

Nm	lbf.ft
1 Nm	0,738 lbf.ft

10	7,376
20	14,751
30	22,127
40	29,502
45	33,190
60	44,254

All images in this catalogue are either owned by us or the copyright is marked on the spot. If an image is incorrectly identified, please notify us. Product images do not represent a performance description.

The contents of our catalogue have been created with the utmost care. However, we cannot guarantee the accuracy, completeness and timeliness of the content.

ALLMATIC-Jakob Spannsysteme GmbH

Jägermühle 10 +49 8377 929 - 0
87647 Unterthingau sales@allmatic.de

www.allmatic.de